

5 KEYS TO UTILIZING STANDARDIZED PATIENTS IN SIMULATION





Index

1. Recruitment
2. Training
3. Standardization
4. Feedback
5. Coaching

Recruitment

Bringing on a group of standardized patients can feel intimidating but it does not have to be.

- Always complete an interview and audition.
- Avoid people who want to "fix" healthcare.
- Look for volunteers such as:
 - Home schooled groups
 - High school theater programs
 - Retirees looking for opportunities



Pro Tips!

Use LinkedIn to find retirees search "retired looking for opportunity".

Make an admin email to coordinate interviews so you dont get too many emails to your personal inbox.

Read our blog
on SP Interviews





Training

All of your standardized patients (SP) need to have training during their onboarding. Not only should they be trained on the patient they will portray but on simulation as a whole.

Avkin offers a certificate program that handles this stage of training for you!



**Sign up for demo
of training course**



What is simulation?



Your SP's need to understand simulation. They need to be bought into the process and believe in it as much as your educators. Remember you are bringing them into your education process. You are not using them as a replacement manikin. .

Flow of simulation



They need to know ahead of time how the day will roll out. How long will the simulation be, how long will they have to write feedback and how long is the debriefing process.



Pro Tip!

Make sure you provide education on their role in debriefing.

Improv Assignments



In the early stages of training you want to ensure your SP's will excel with improv. Look up a few improv assignments or visit our blog listed below. You want to make sure your actors don't start laughing or breaking character.

**Read more about
Improv Assignments**



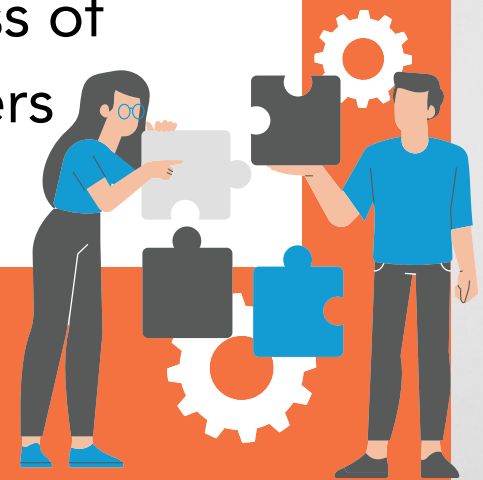
Standardization

TEAM STANDARDIZATION

All SPs playing the role of the patient perform with the same level of difficulty without "going rogue" during simulation.

INDIVIDUAL STANDARDIZATION

The SP portrays the patient at the same level of difficulty for every simulation. Regardless of the learners ability.



Pro Tip!

Schedule observations of SPs playing the same role. This will help with team standardization.



Feedback

THIRD PERSON

This will take away any bias when delivering feedback & allow SPs to speak as the patient.

SANDWICH TECHNIQUE

This is not recommended for debriefing but, for feedback they need structure.

STUDENT SAFETY

Psychological safety is very important. Ensure SPs understand the weight of their feedback.

AVOID GOOD/BAD

The same way we do not want to tell students good or bad it is the same for SP feedback.

COACHING

Provide coaching right after simulation to your standardized patient.

- Give them feedback on their performance and feedback.
- Keep the conversation casual, make sure they know you are there to support them.
- Give them notes on the things that need to change but also the positives and what they should continue doing.



Pro Tip!

Provide feedback every time an SP does a simulation for the first time. Even if faculty is playing the role of the patient.





GET STARTED WITH STANDARDIZED PATIENTS

If you are ready to build a standardized patient program Avkin is here to help. Our team of CHSE certified educators are ready to mentor you to help you develop your program.

**Learn About
SP Consulting**



WEARABLE SIMULATORS

Avkins world renown wearable simulators are said to be the future of healthcare simulation. View our page of high fidelity wearable simulators.

**View Avkin
Wearable Simulators**

