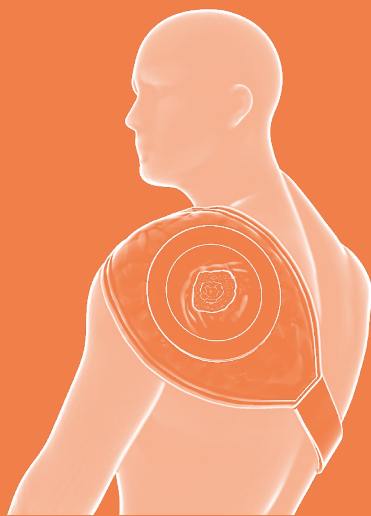


Avwound

Wearable Wound Care Simulator

USER MANUAL

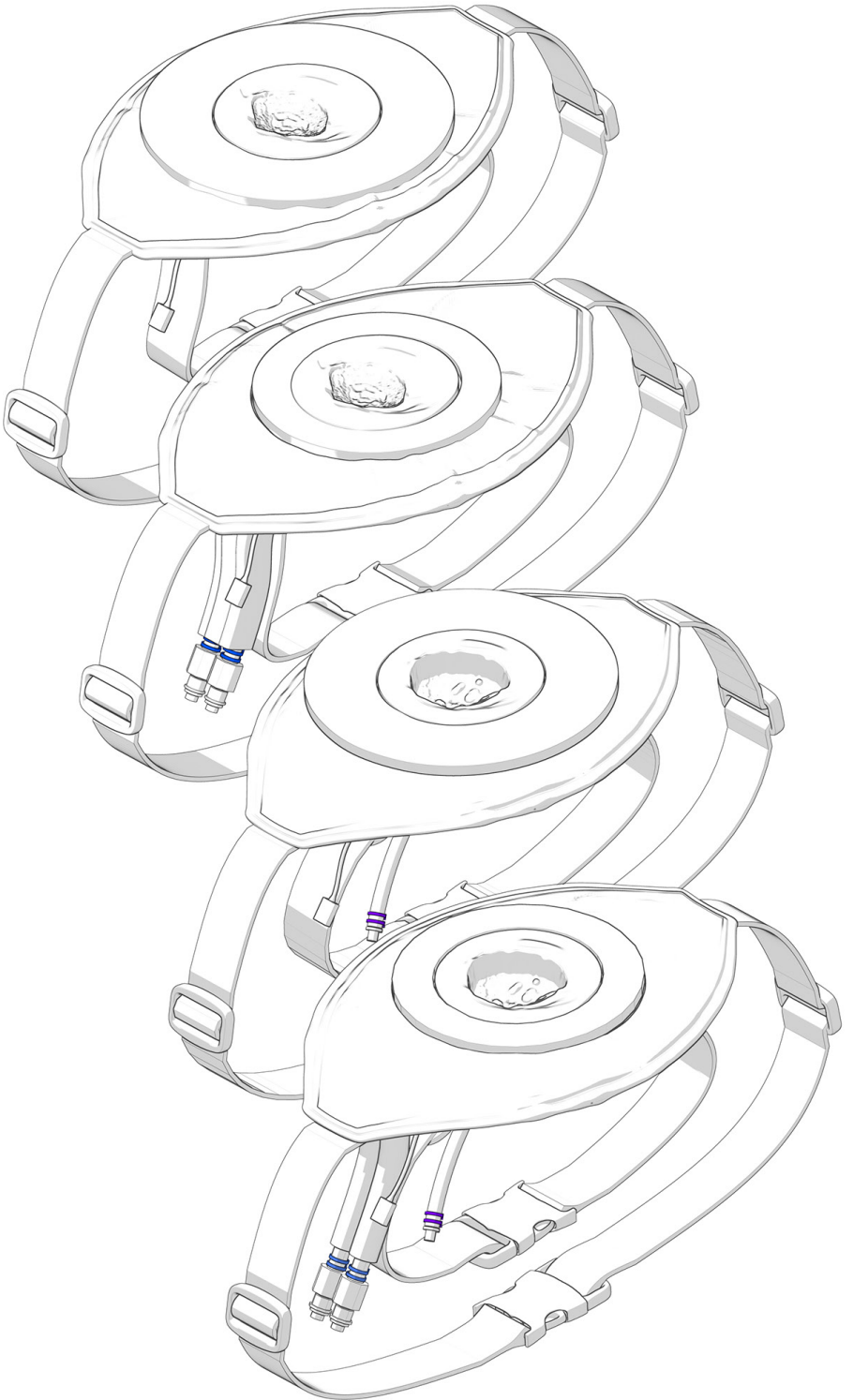


Customer Assistance

302-562-2110

Technical Support

302-562-2040





WELCOME TO YOUR NEW AVWOUND!

BLANCHING

Learners can practice how to test for healthy and unhealthy skin

FLUID EXCRETION

Observe and clean blood and exudate as it actively seeps out of a wound or rests on a wound dressing

STAGING

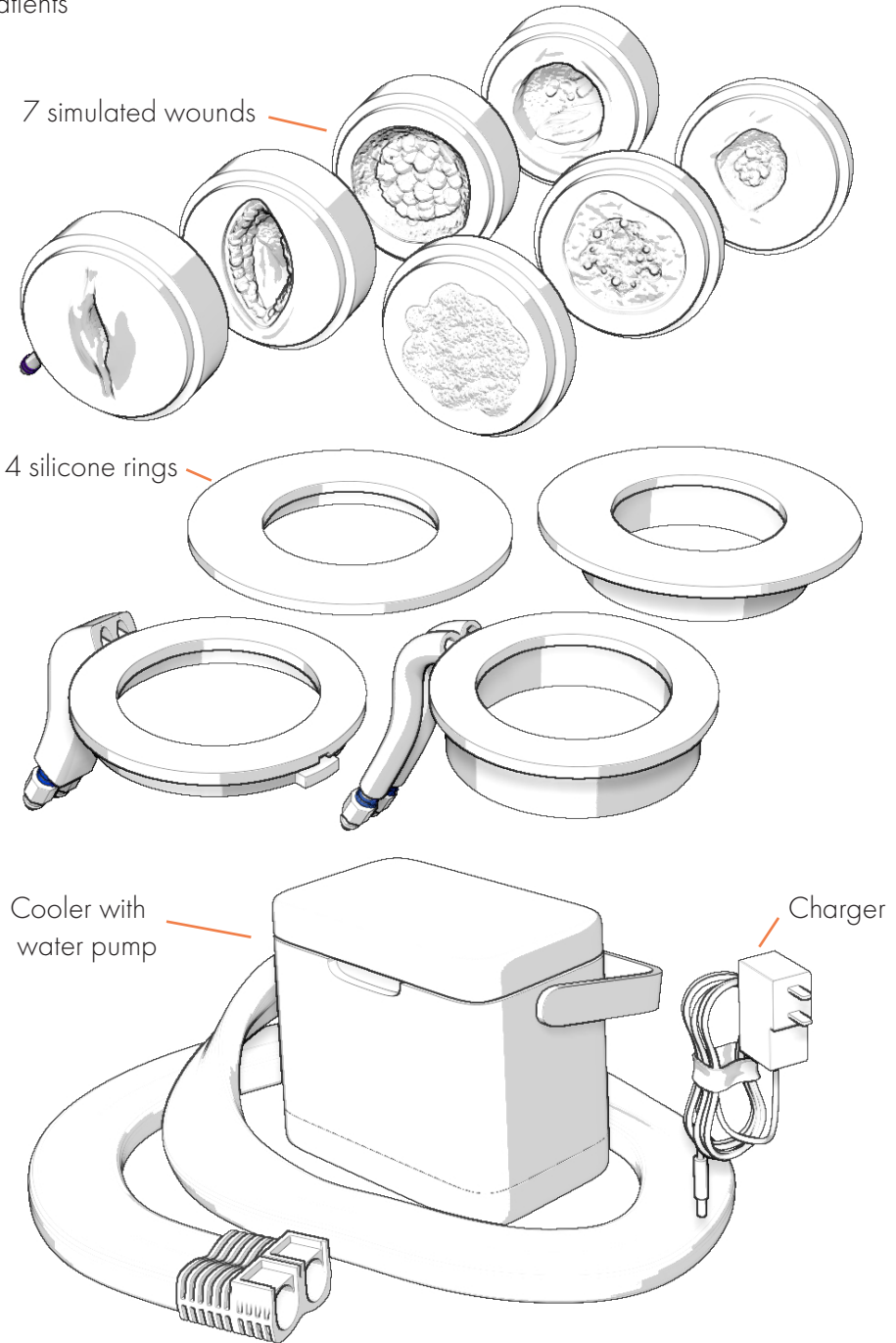
Allows students to classify pressure injuries at various different stages

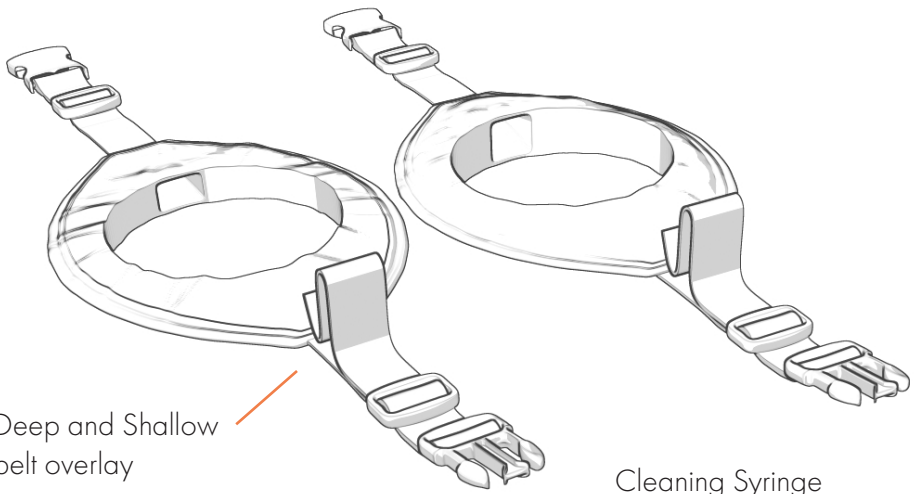
VERSATILITY

Allows the user to put the wound on the thigh, stomach, back, and shoulders

WHAT'S INCLUDED

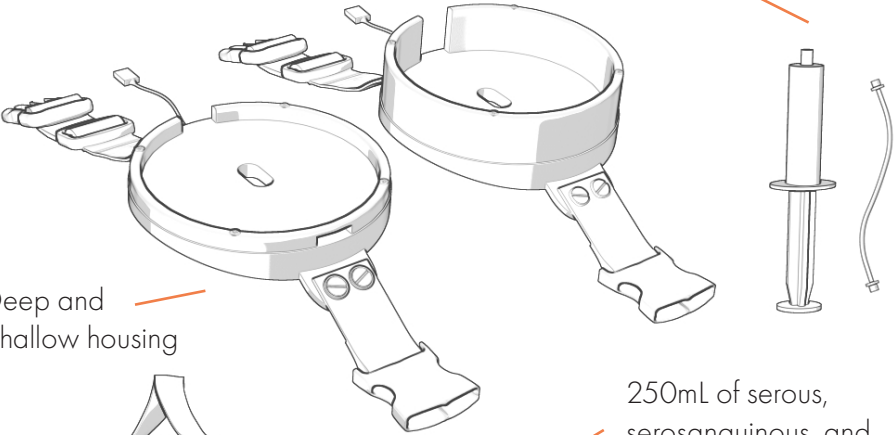
Awound: wearable wound management device for use with standardized patients





Deep and Shallow belt overlay

Cleaning Syringe

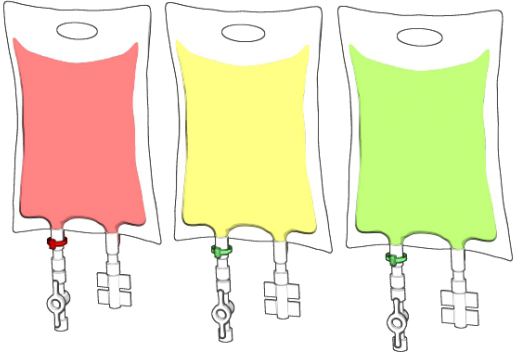


Deep and Shallow housing

250mL of serous, serosanguinous, and seropurulent exudate



Control bag with 250mL of blood and 250mL of purulent exudate



GETTING STARTED

Watch the instructional video on the Avkin website.

- 1 Download the Avkin app on your Apple or Android device



- 2 Hang the control bag on IV Pole or on the side of the hospital bed, the height of the control bag is not important



3 There are 4 different types of set ups you can choose from:

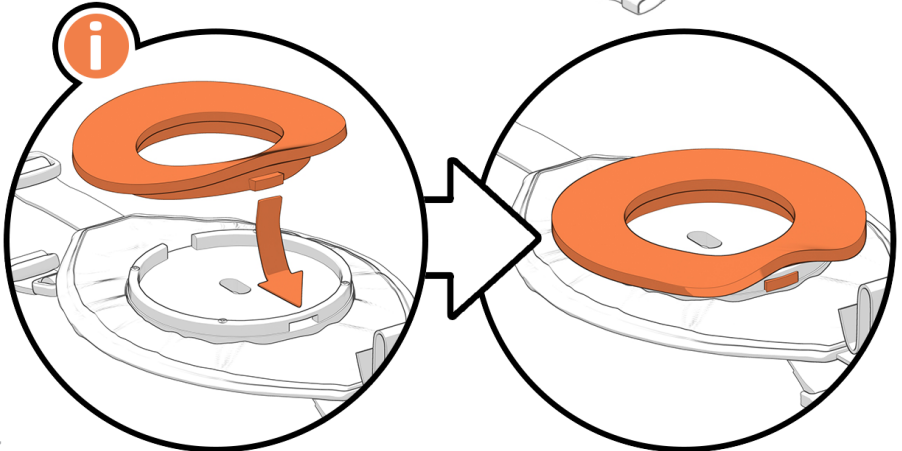
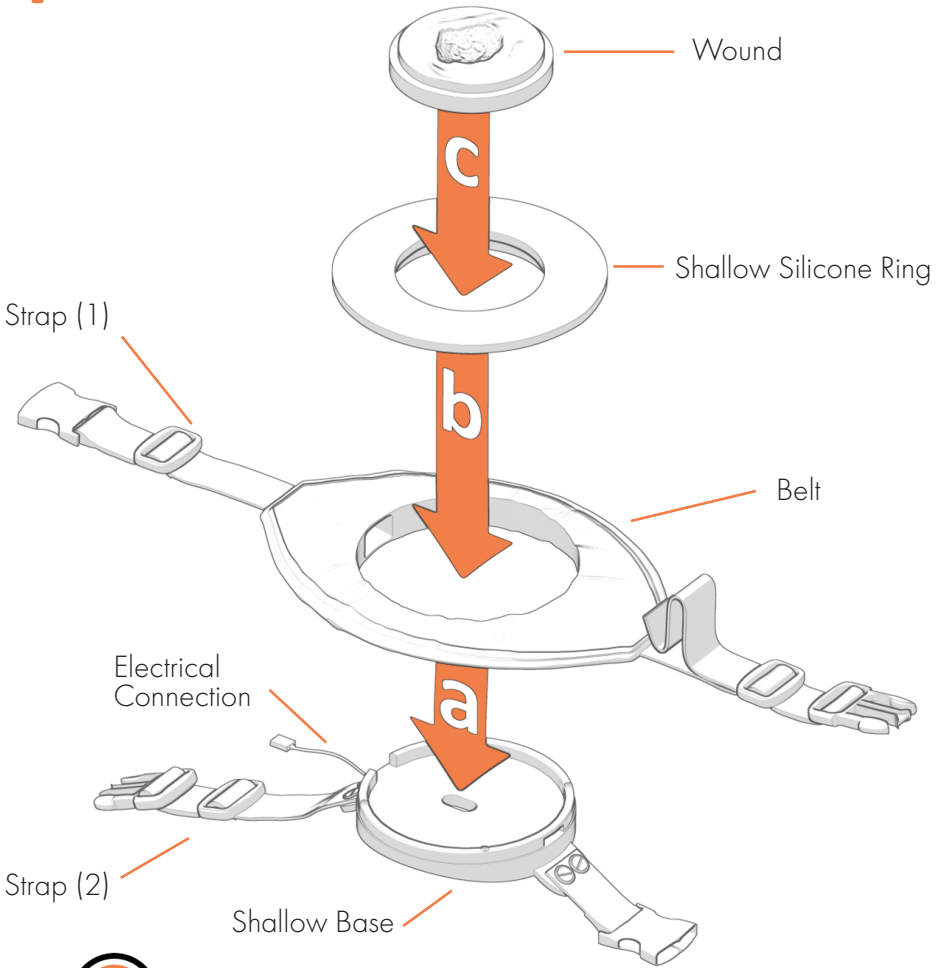
- a** Shallow without blanching (Pressure ulcers Stage 1, Stage 2, and Stage 3 healing wound, no fluids or blanching, pressure sensors only)

- b** Shallow with blanching (Pressure ulcers Stage 1, Stage 2, and Stage 3 wound, no fluids, blanching and pressure sensors only)

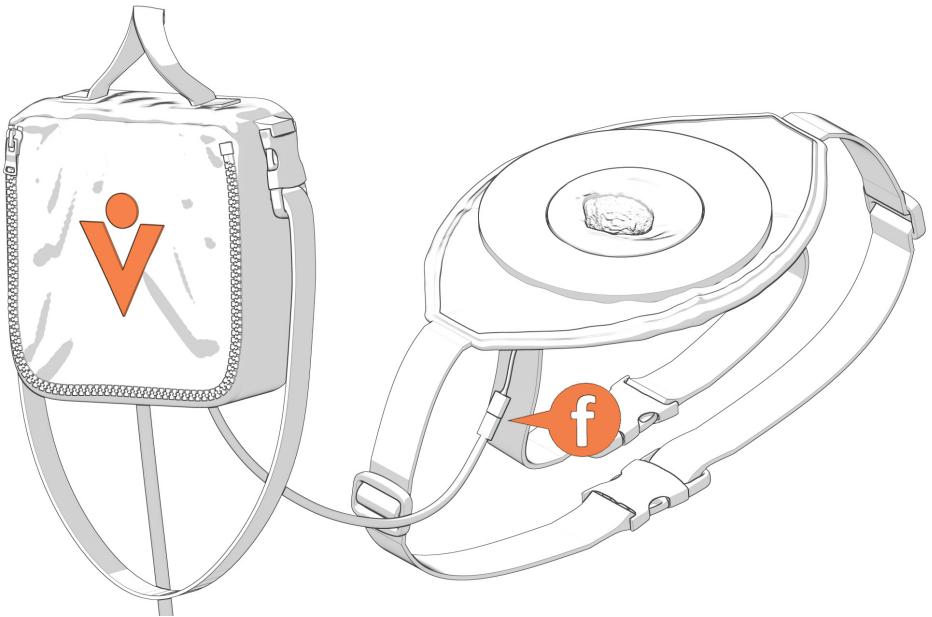
- c** Deep without blanching (Pressure Ulcers Stage 3, Stage 4, Large Laceration, and Dehisced Surgical wound, no blanching, fluids and pressure sensors only)

- d** Deep with blanching (Pressure Ulcers Stage 3, Stage 4, Large Laceration, and Dehisced Surgical wound, blanching, fluids, and pressure sensors)

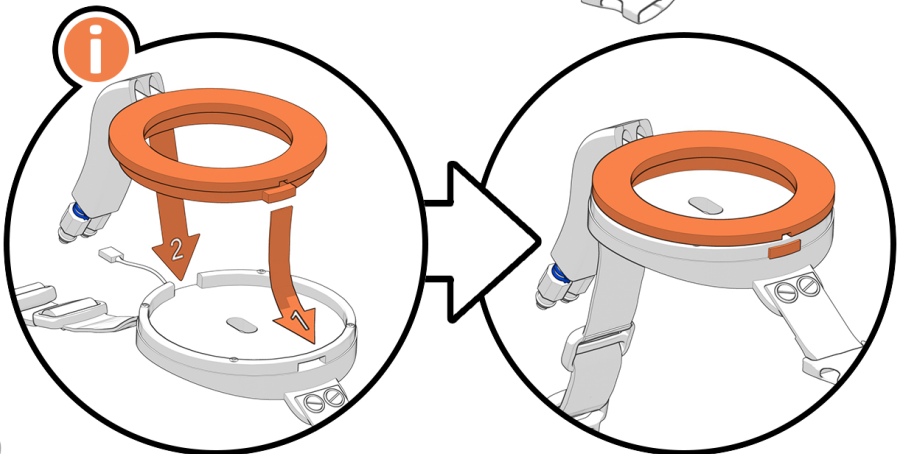
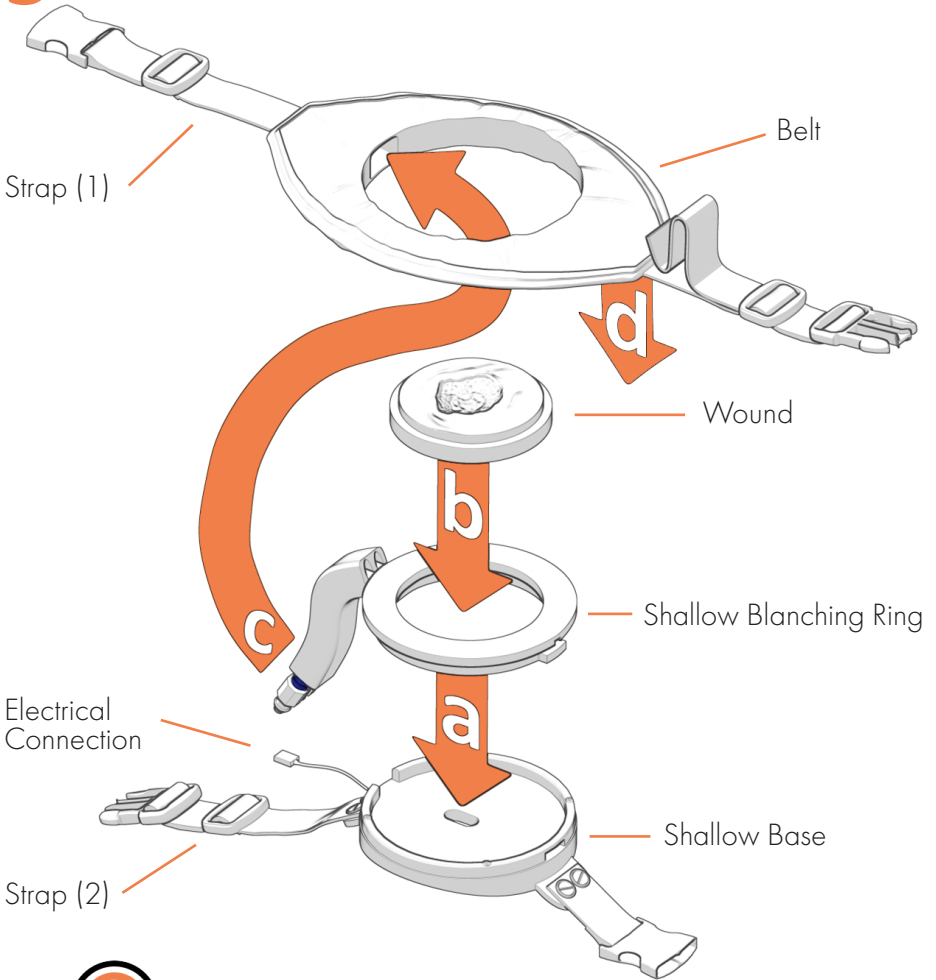
4 Shallow without blanching set up



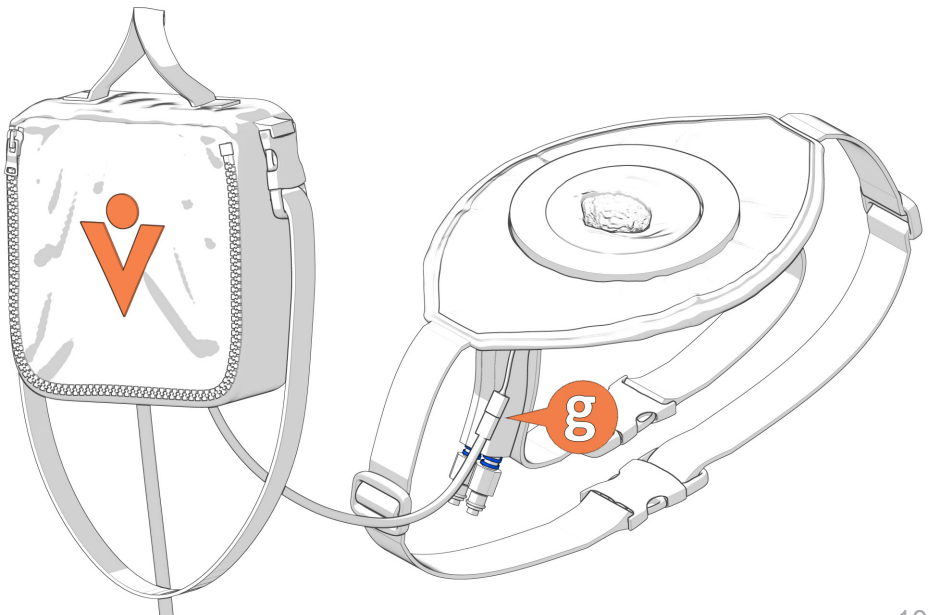
- a** Put belt on base
- b** Insert shallow silicone ring
 - i** Make sure to match the notch in the housing to the notch in the silicone ring
 - ii** Push the silicone ring into the device and ensure it is level and touching the base of the device
- c** Insert wound
- d** Put wound assembly on simulated participant
- e** Connect both sets of straps
- f** Connect electrical connection to bag



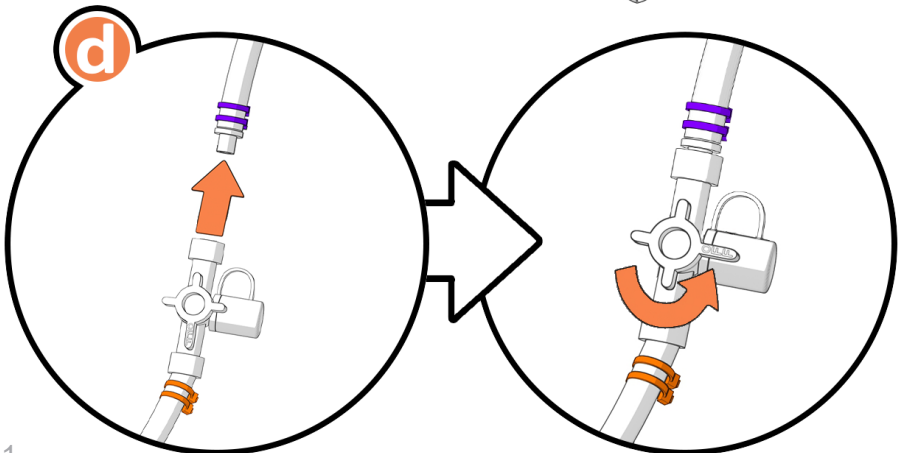
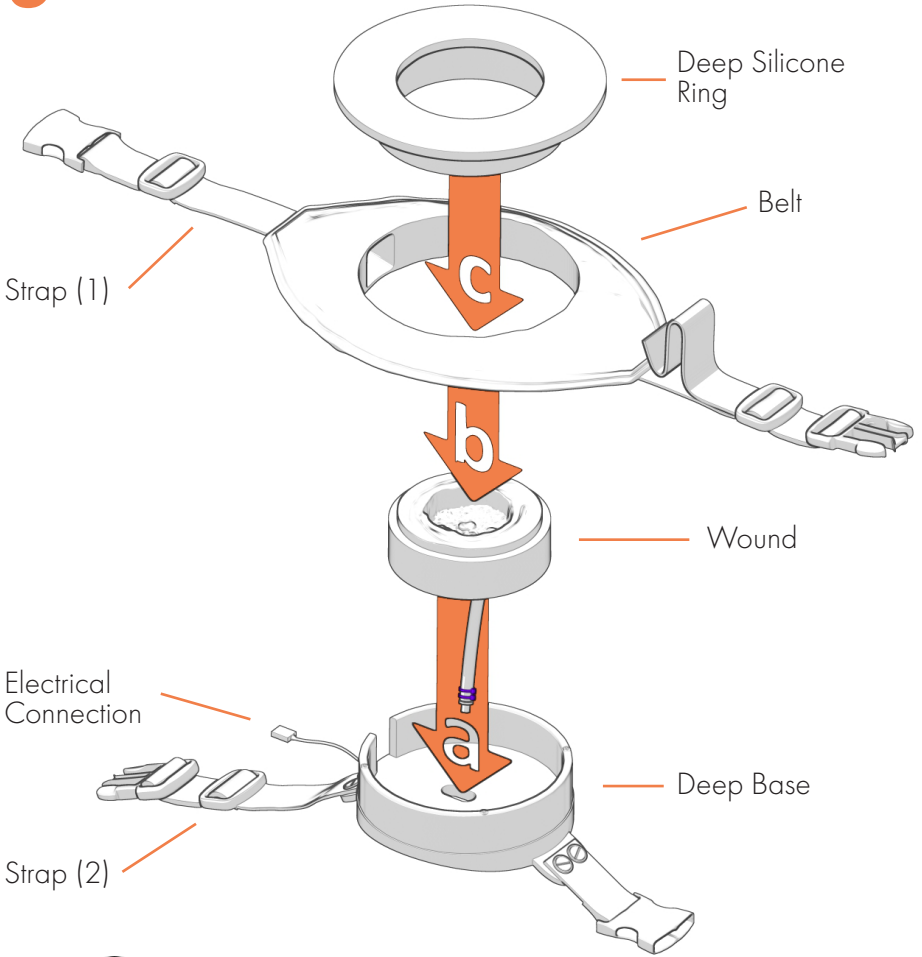
5 Shallow with blanching set up



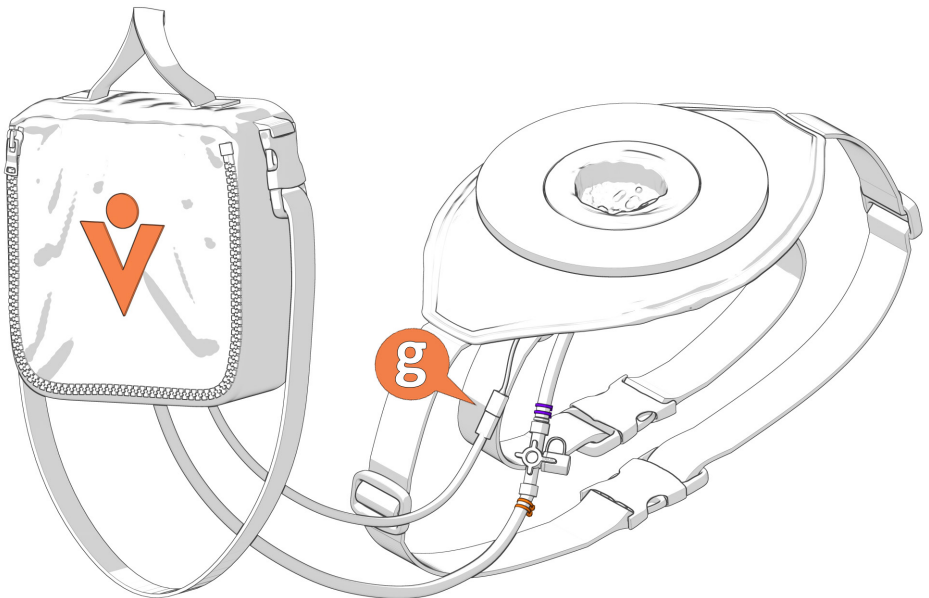
- a** Insert shallow blanching ring to base
 - i** Make sure (1) silicone notch goes inside hole in base and (2) tubing lines up with opening designated for it in base
- b** Insert wound
- c** **Making sure belt stays above base when inserting**, feed tubing from blanching ring through tunnel inside of belt
- d** Put belt on base
- e** Put wound assembly on simulated participant
- f** Connect both sets of straps
- g** Connect electrical connection to bag



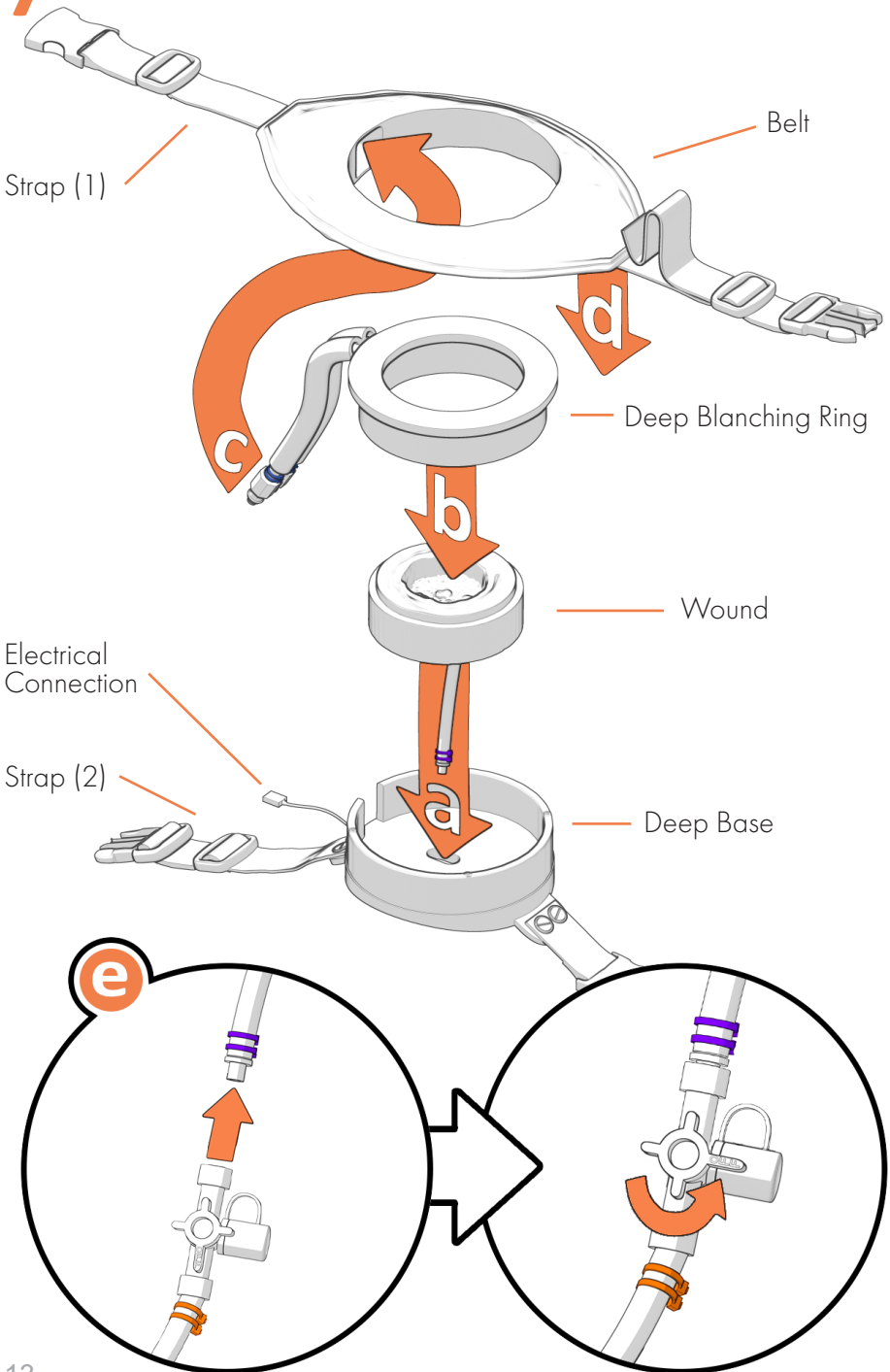
6 Deep without blanching set up



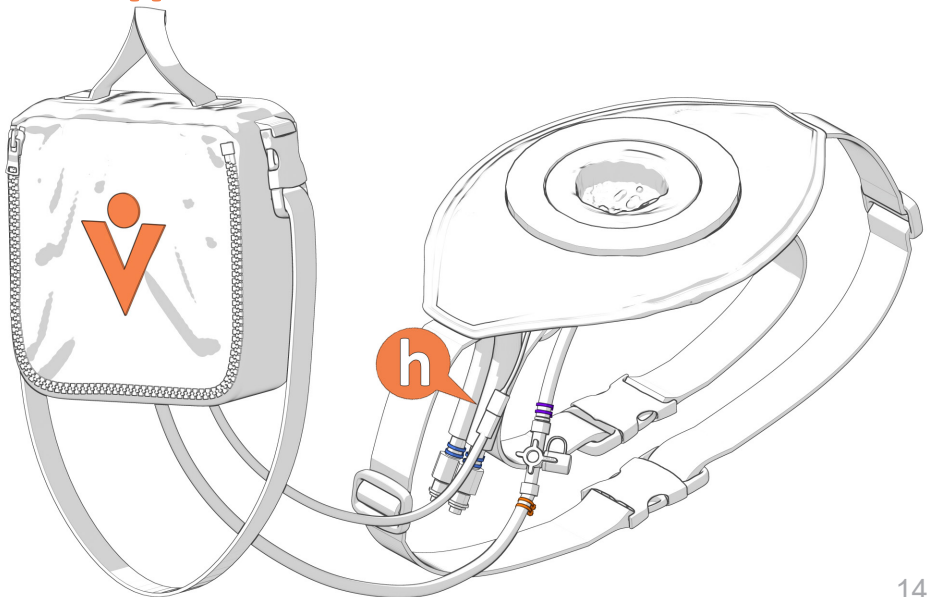
- a** Insert wound into base, make sure tubing goes through hole at the bottom of the base and snaps into c-housing under the base
- b** Put belt onto base
- c** Insert deep silicone ring onto base
- d** Connect fluidics tubing from wound to fluidics tubing from bag, move off position on the stopcock to red cap
- e** Put wound assembly on simulated participant
- f** Connect both sets of straps
- g** Connect electrical connection to bag



7 Deep with blanching set up

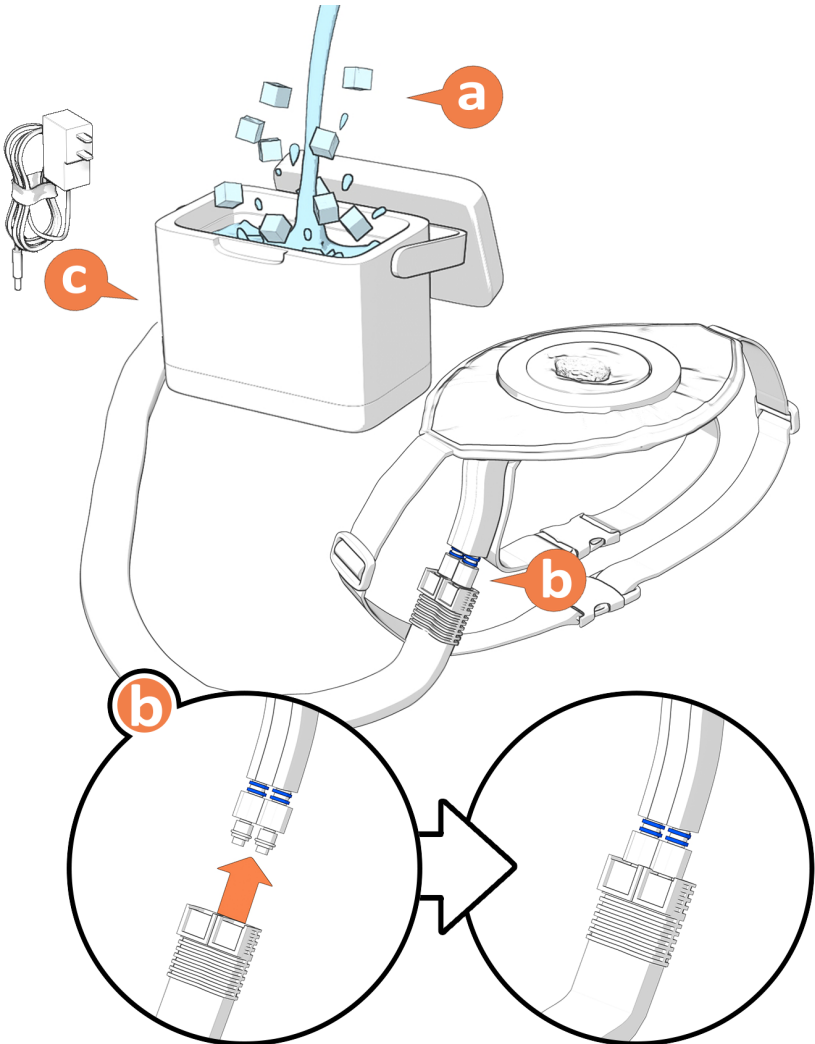


- a** Insert wound into base, make sure tubing goes through hole at the bottom of the base and snaps into c-housing under the base
- b** Insert deep blanching ring onto base, align tubing with notch in base
- c** Run tubing from deep blanching ring through tunnel inside of belt
- d** Put belt onto base
- e** Connect fluidics tubing from wound to fluidics tubing from bag, move off position on the stopcock to red cap
- f** Put wound assembly on simulated participant
- g** Connect both sets of straps
- h** Connect electrical connection to bag



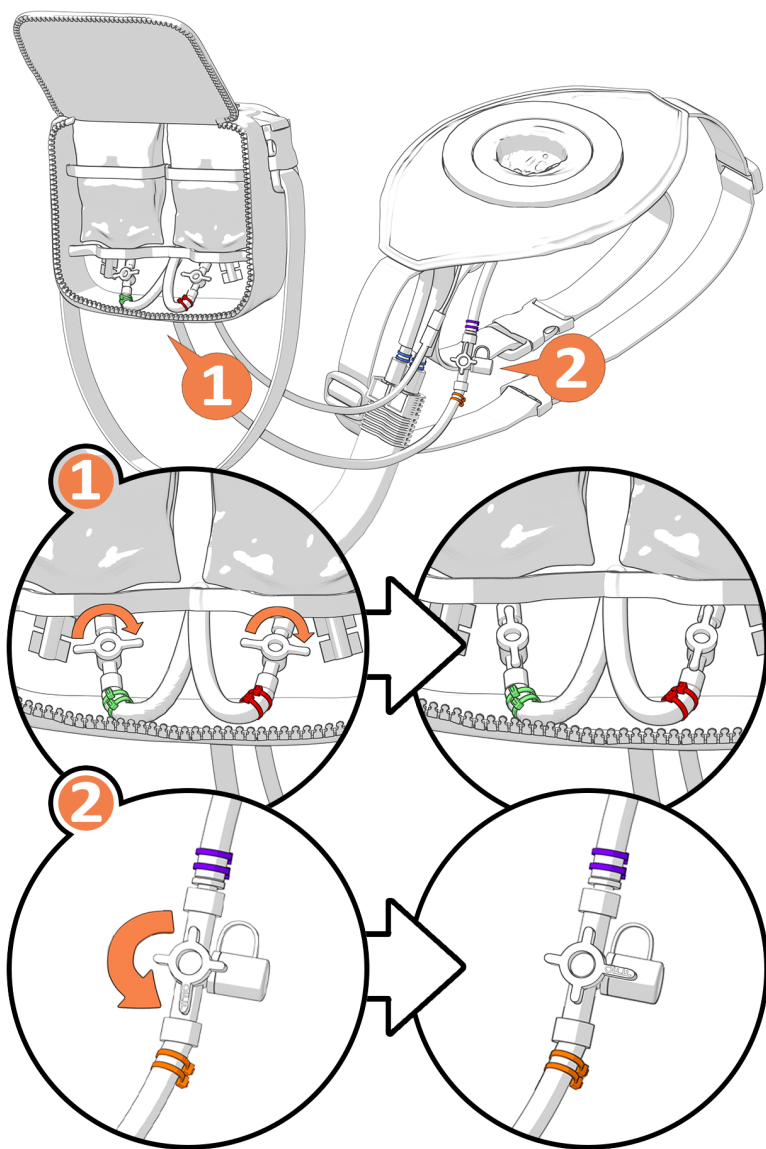
8 Setting up the cold water pump (used only for blanching set-ups)

- a** Fill cooler with ice and cold water
- b** Connect tubing with blue label coming out of blanching ring to cooler tubing (2 connections)
- c** Plug in cooler, blanching will be in effect 5-10 minutes after it's plugged in and the fluid connectors are attached



9 Set up fluidics

- a** Open all stopcocks from the (1) IV bags (2 total) and (2) tubing line (1 - at stopcock to wound, off should be to red cap)

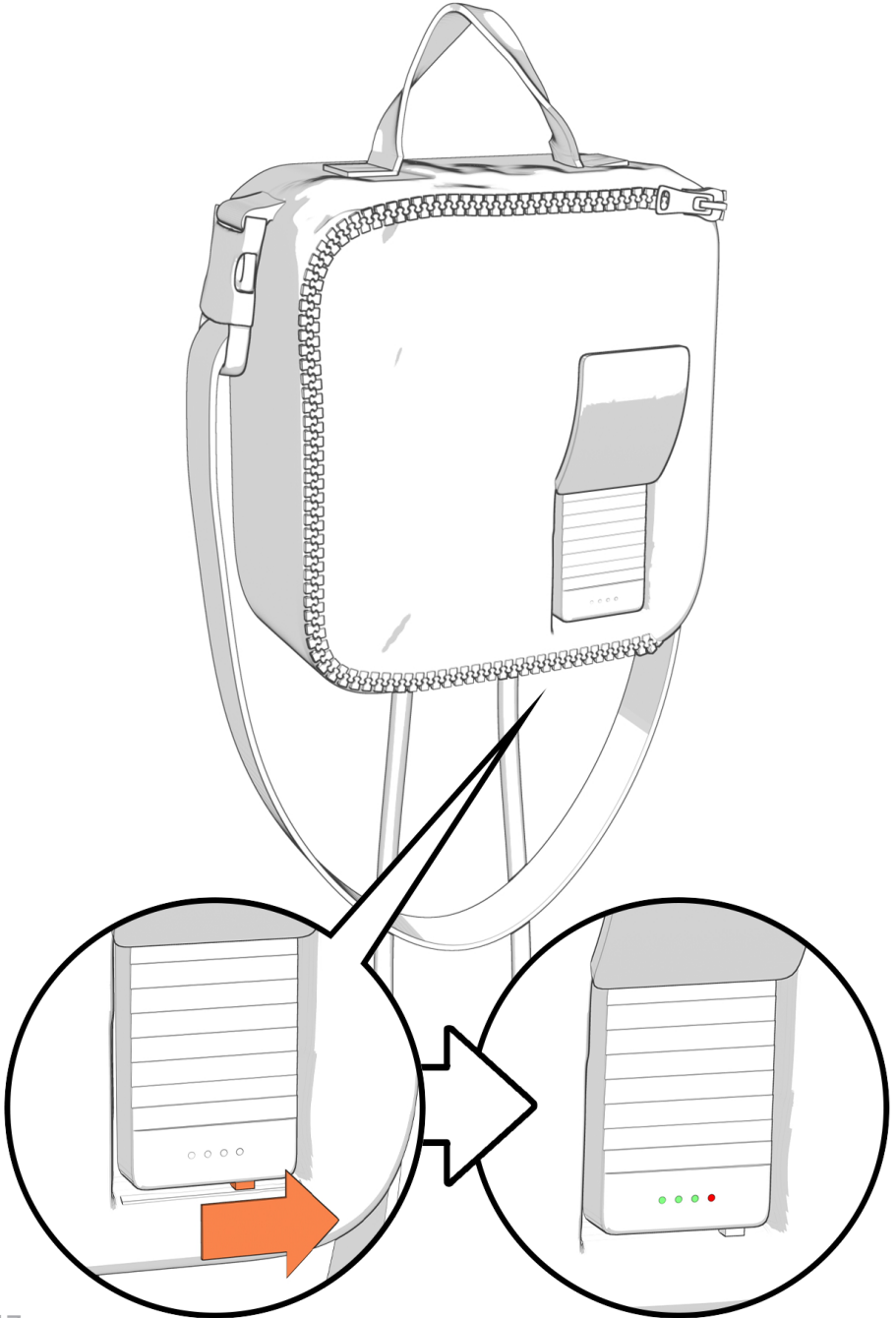


- b** Control the fluidics through the app (see following page)

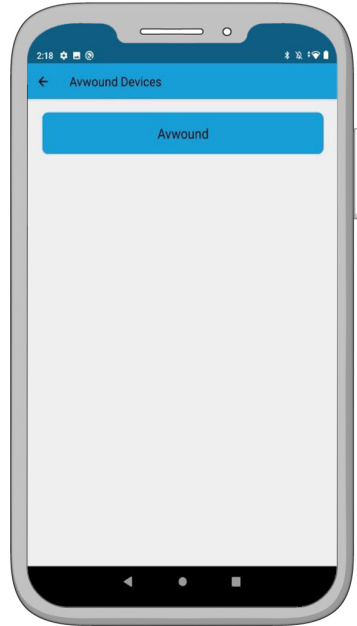
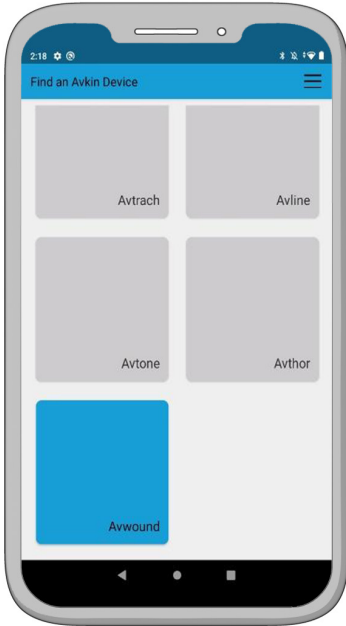
10

General set up for all devices

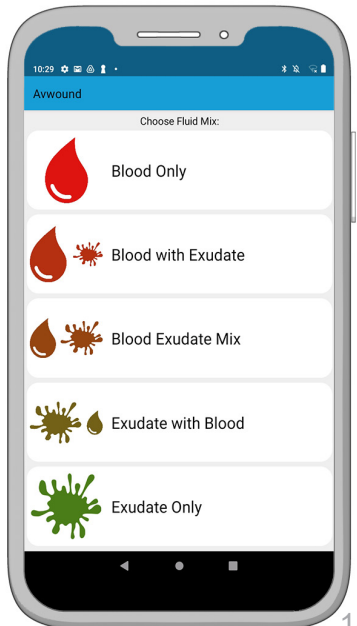
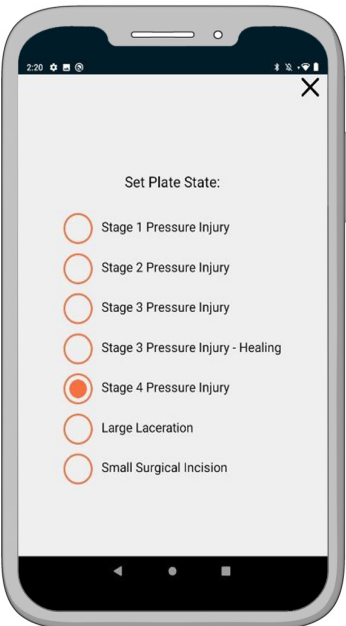
- a Turn on battery in control bag



b Connect to Avwound through App and choose your wound

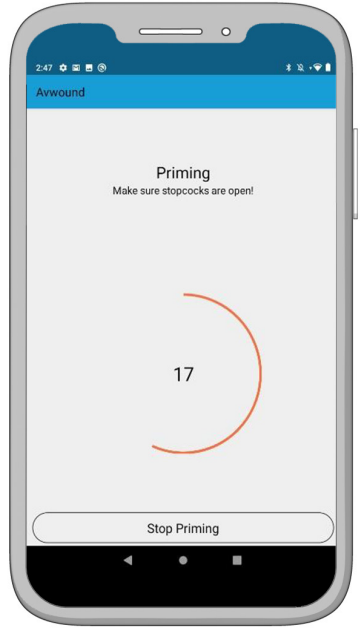
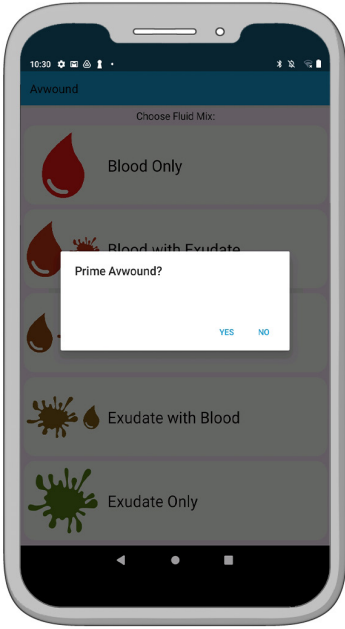


c On the app you can set how sensitive you want the wound to be in the settings as well the ratio of fluids you want

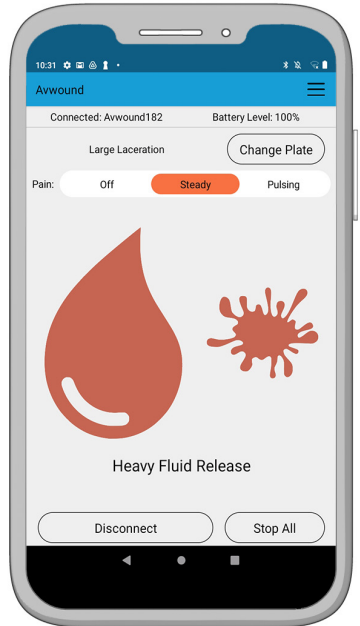
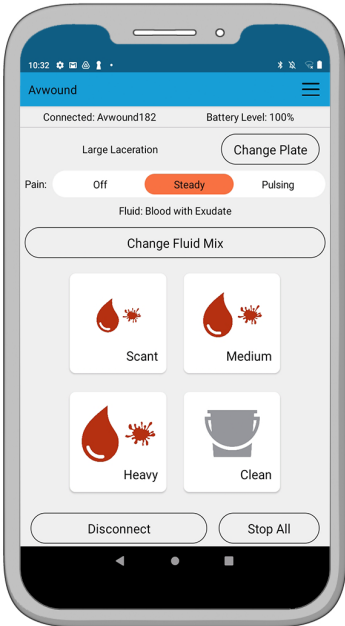


d Turning on fluids:

i Option to prime at the start



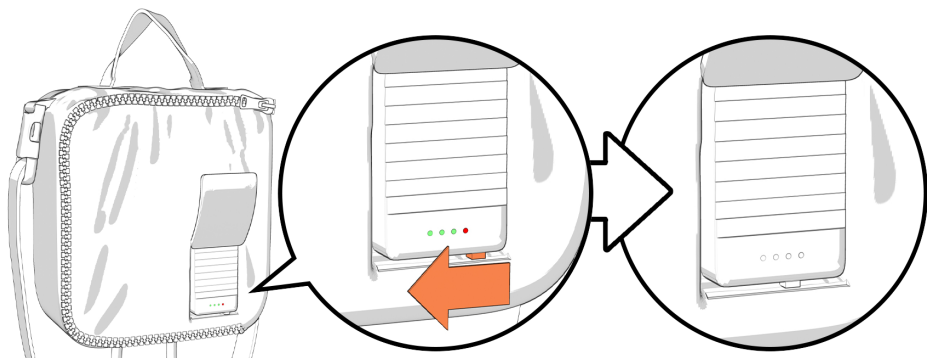
ii 3 options for fluid control: scant/medium/heavy amount



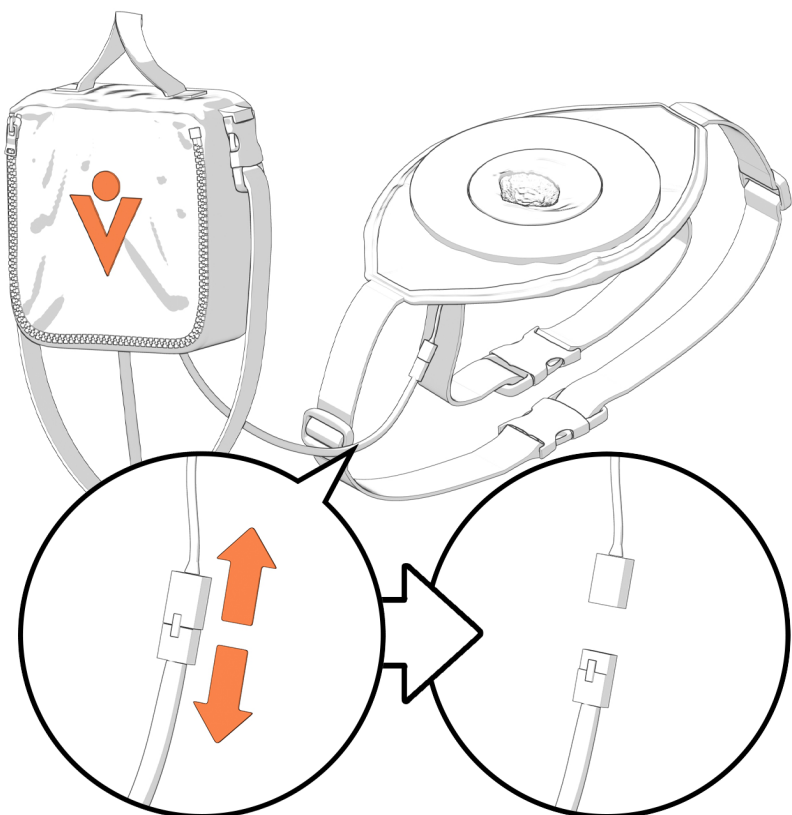
CLEAN UP

1 Shallow, non-blanching

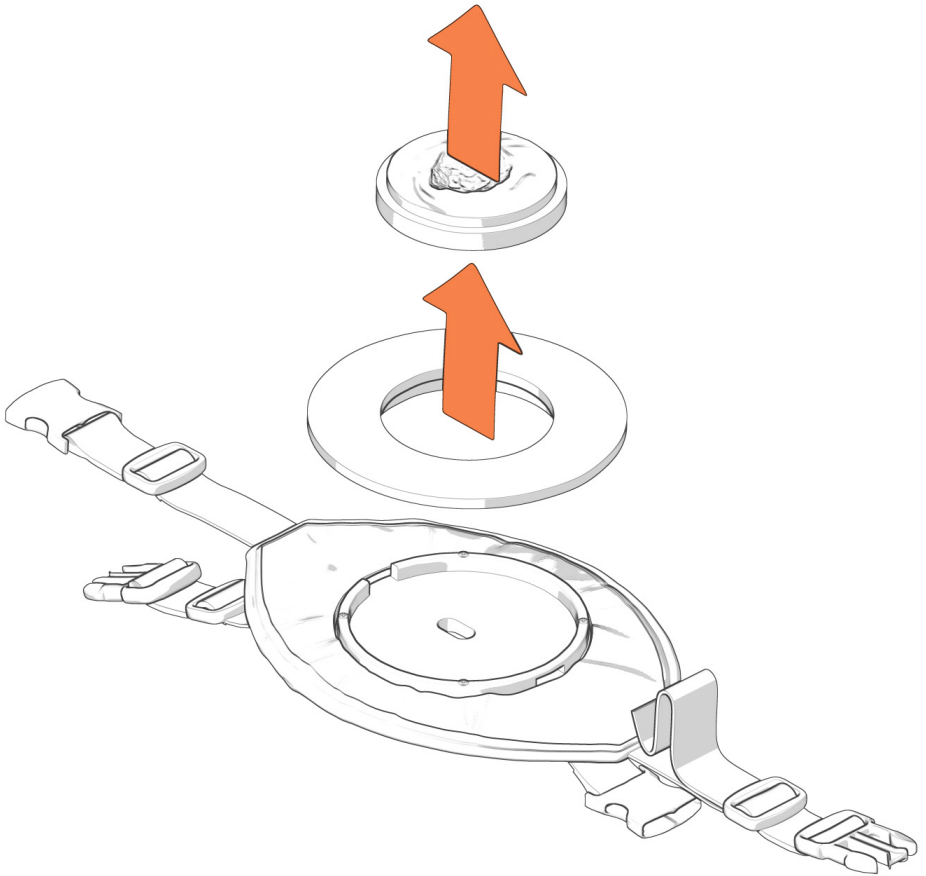
a Turn off device



b Disconnect electronics connector



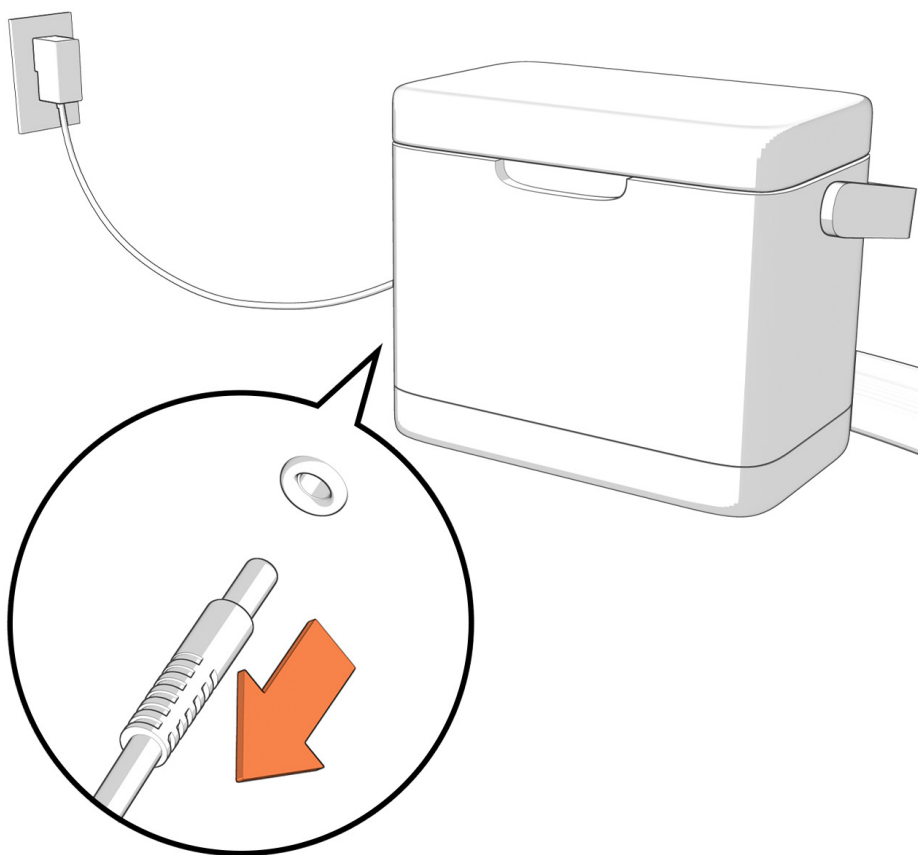
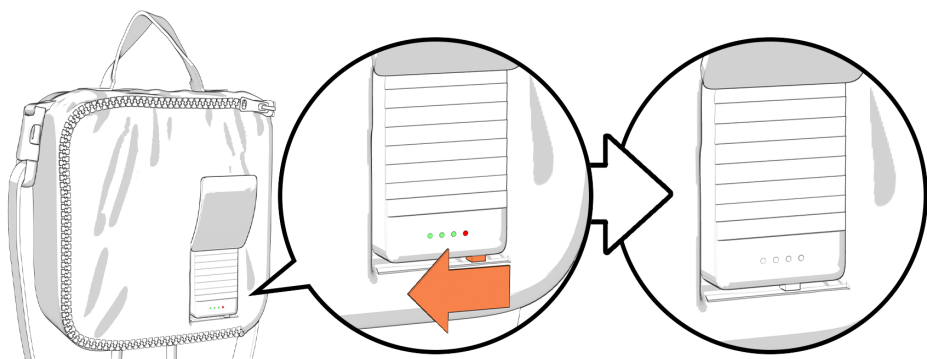
c Pull out wound insert and shallow silicone donut



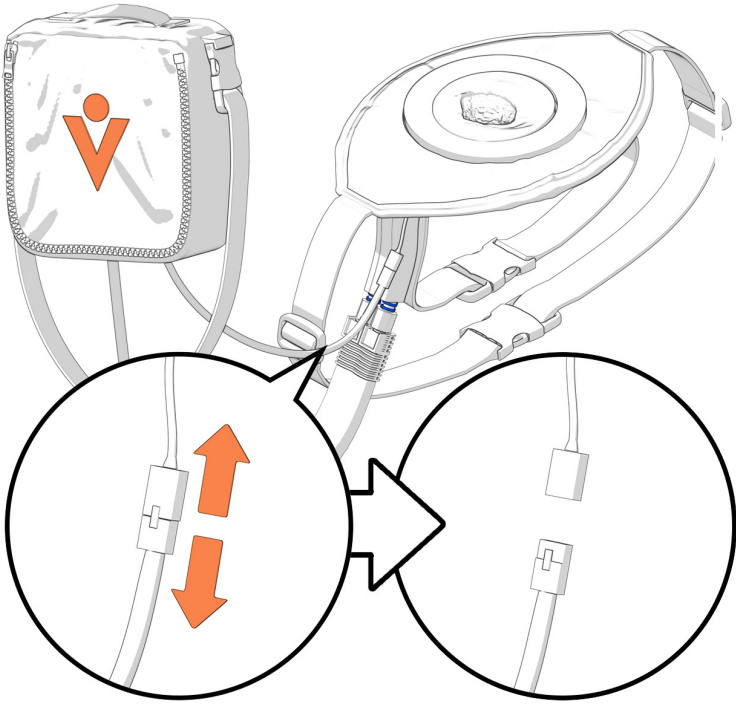
d Clean the silicone inserts and rings with hand sanitizer or 70% alcohol solution. Follow up with cornstarch or baby powder if desired

2 Shallow, blanching

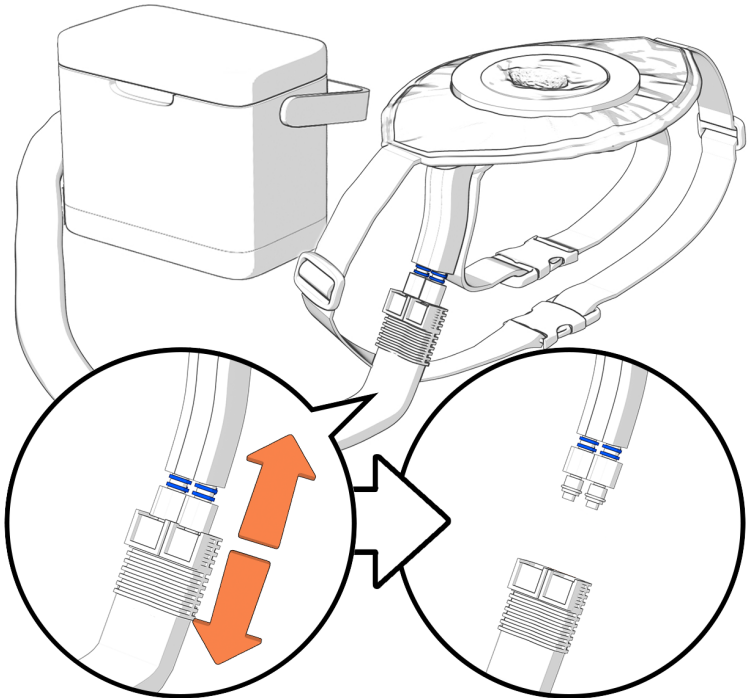
a Turn off device and unplug cooler



b Disconnect electronics connector



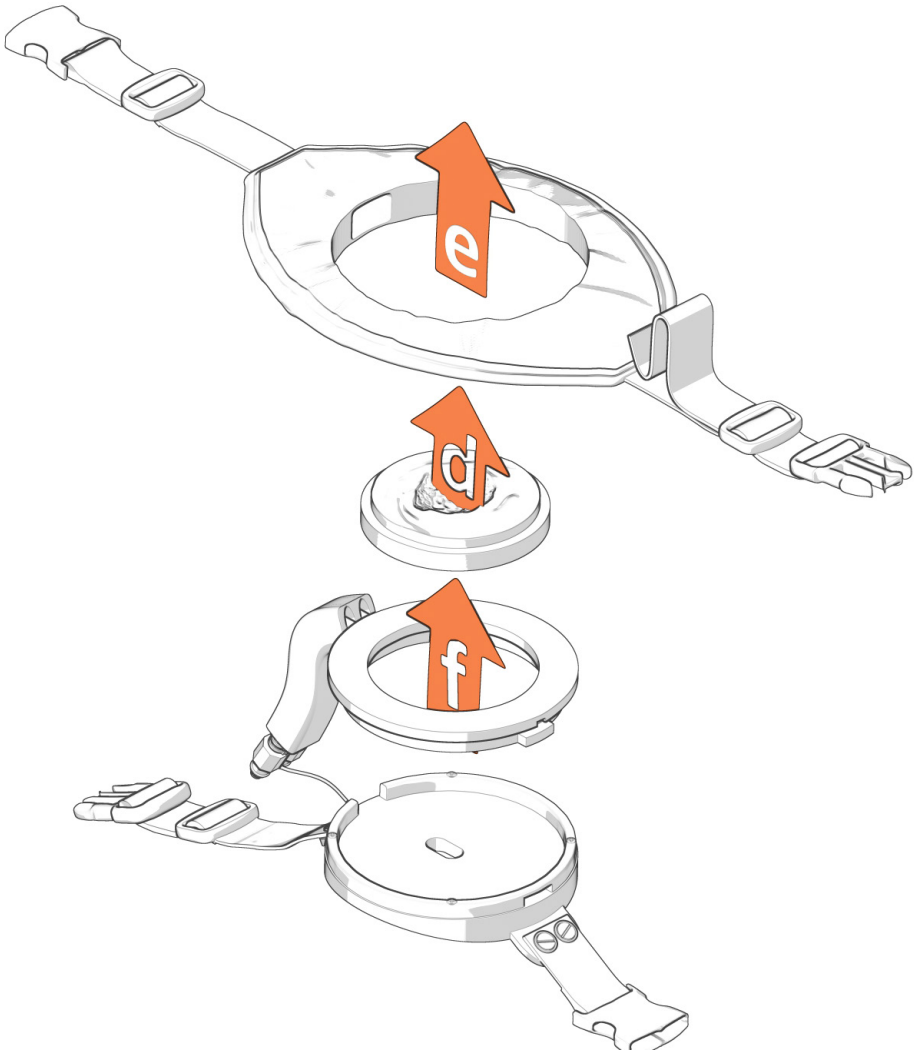
c Disconnect tubing labeled blue from cooler



d Remove wound insert

e Lift off fabric belt

f Pull the blanching ring out of the belt



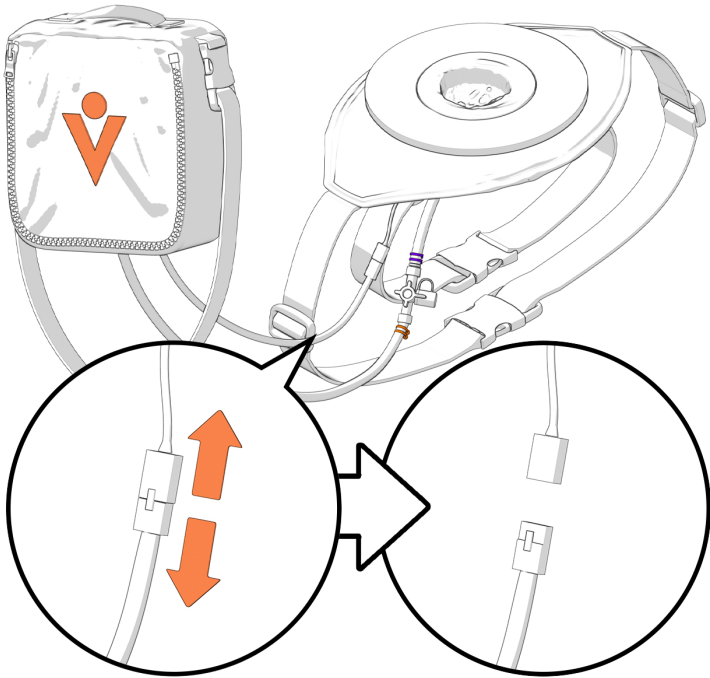
g Clean the silicone inserts and rings with hand sanitizer or 70% alcohol solution. Follow up with cornstarch or baby powder if desired.

3 Deep, non-blanching

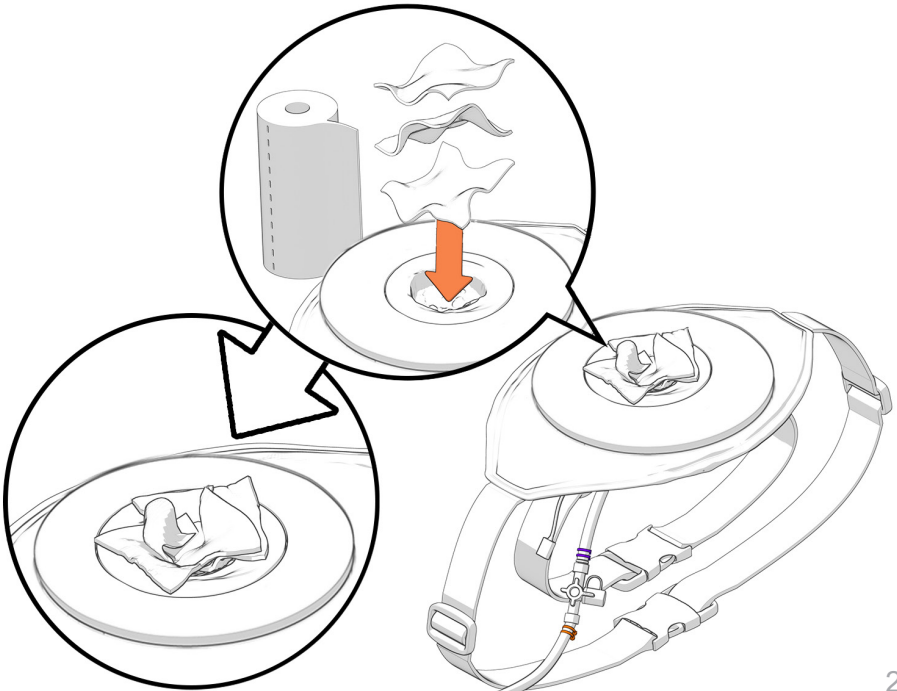
- a Note* Be mindful of the connector that comes from the silicone tubing to the insert, it can break if too forceful*
- b Turn off fluidics from the App by pressing 'Stop All' in the lower righthand corner



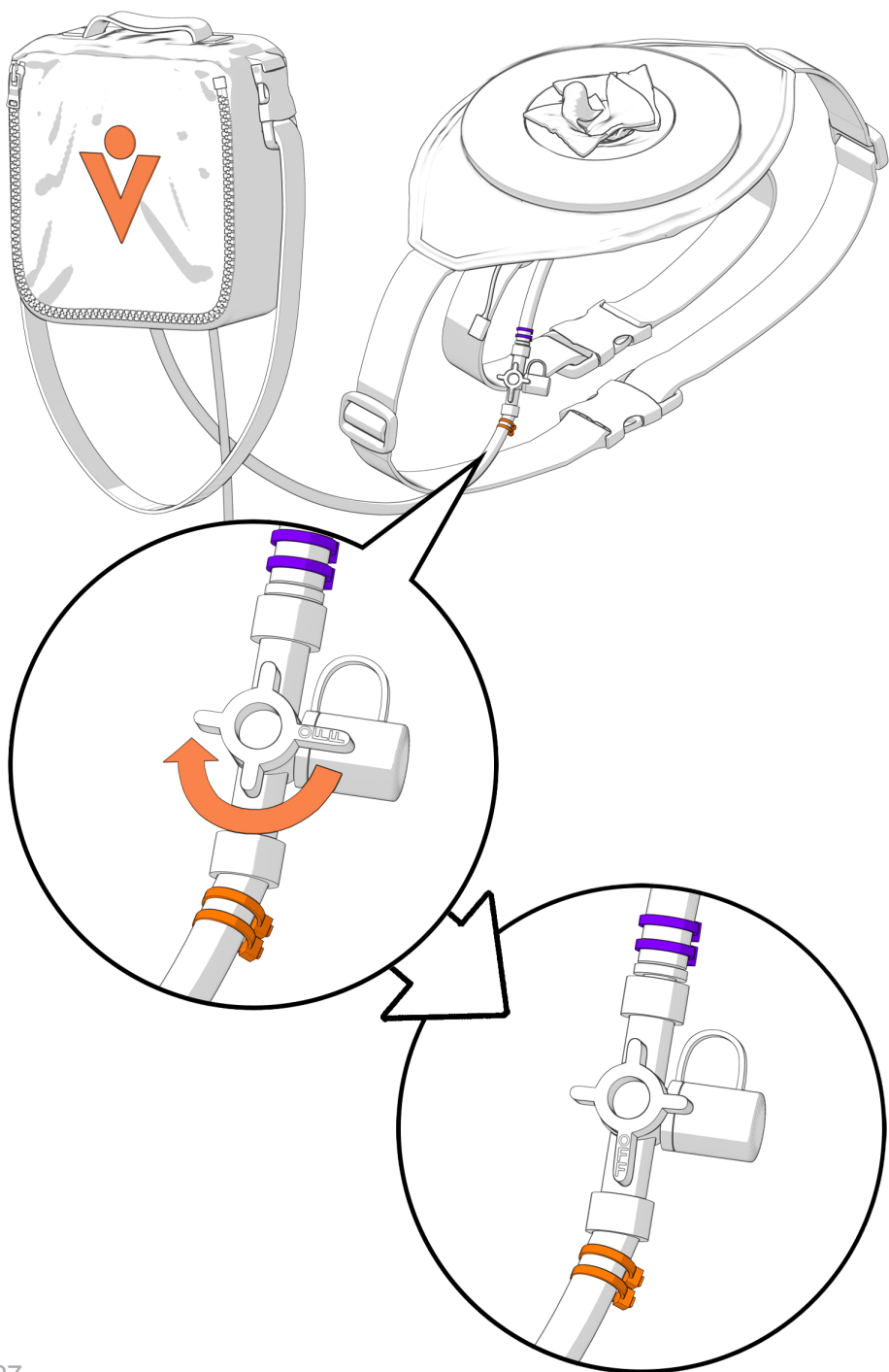
C Disconnect electronics connector



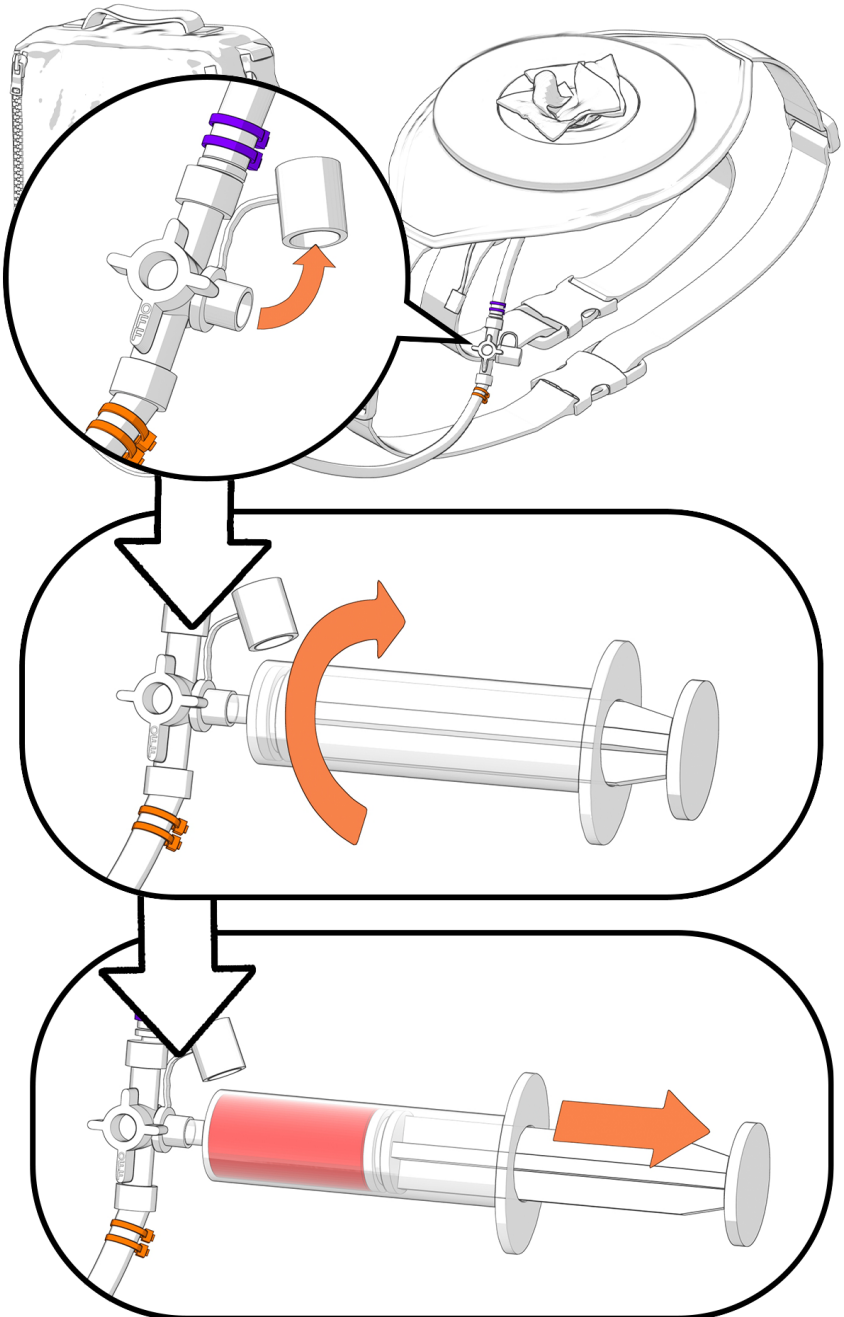
d Pack wound with paper towels



- e** Turn the 3-way stopcock off to orange to stop fluids coming from the bag

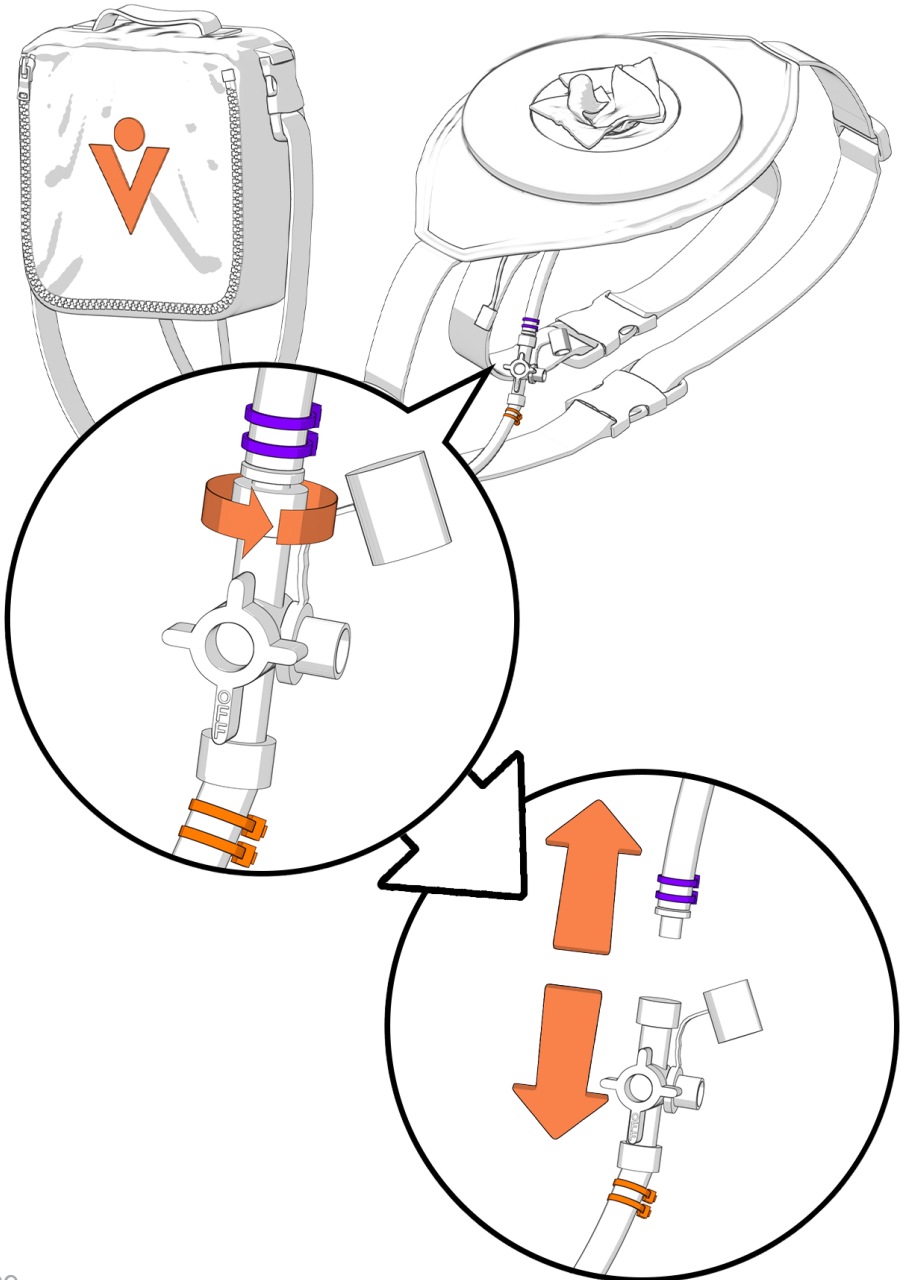


- f** Using the cleaning syringe, remove red cap from the stopcock and attach the cleaning syringe. Suction the syringe to remove most of the fluids from the insert



g Disconnect cleaning syringe and fill with distilled water (and an optional 70% alcohol solution)

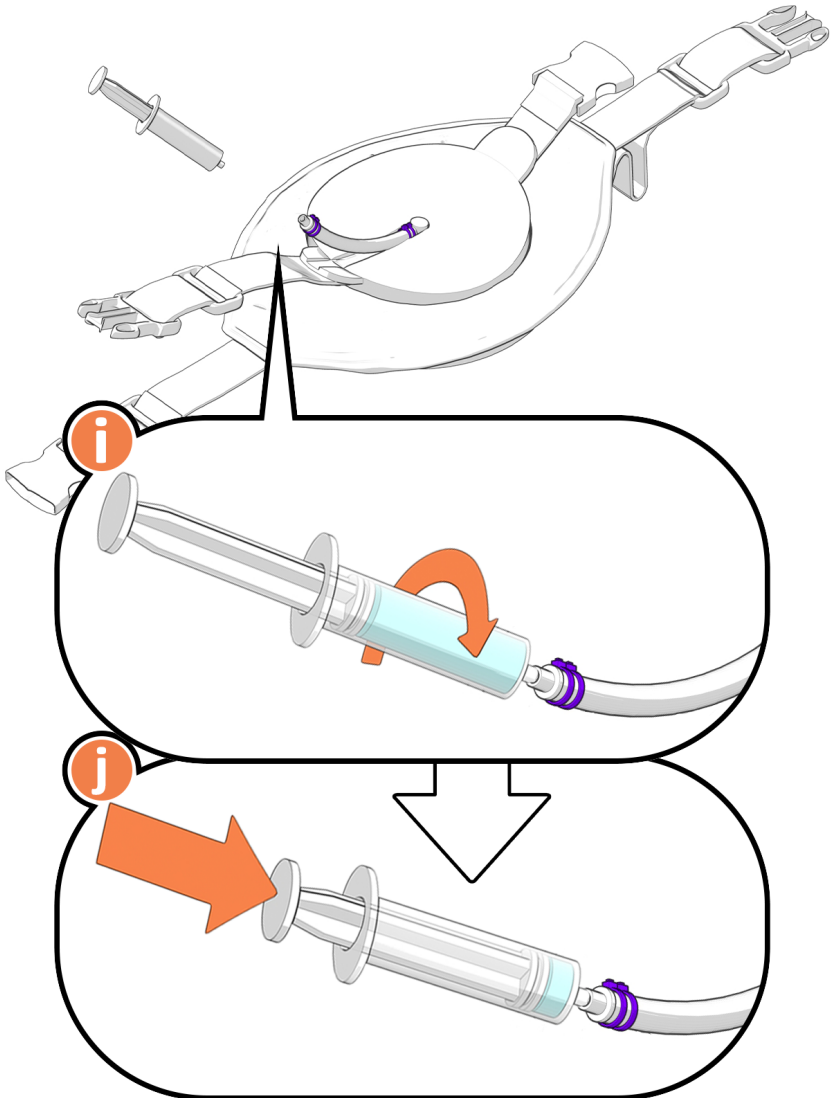
h Disconnect the tubing that comes from the wound insert from the 3-way stopcock at purple label



i Flip device so wound opening is facing the table, connect cleaning syringe to wound tubing at purple label

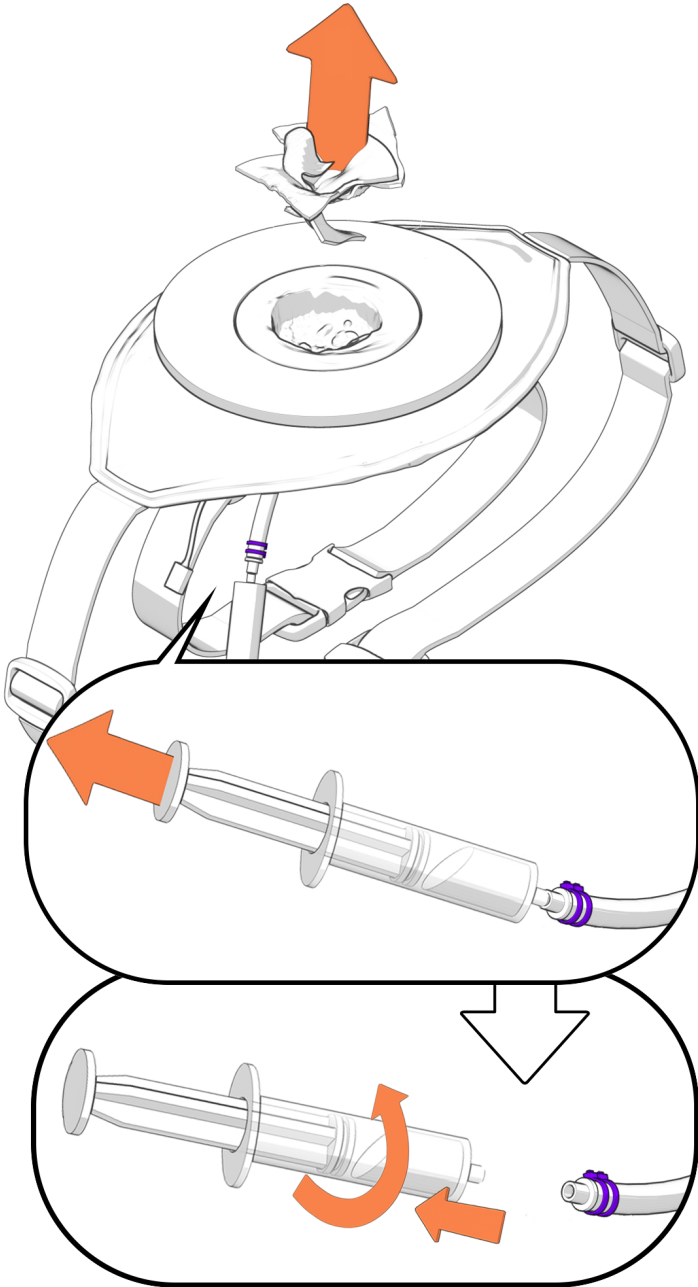
j SLOWLY flush with 30 ml of fluids

i If you flush too quickly, the silicone will swell up from the water not being able to come out fast enough and is dangerous to the silicone

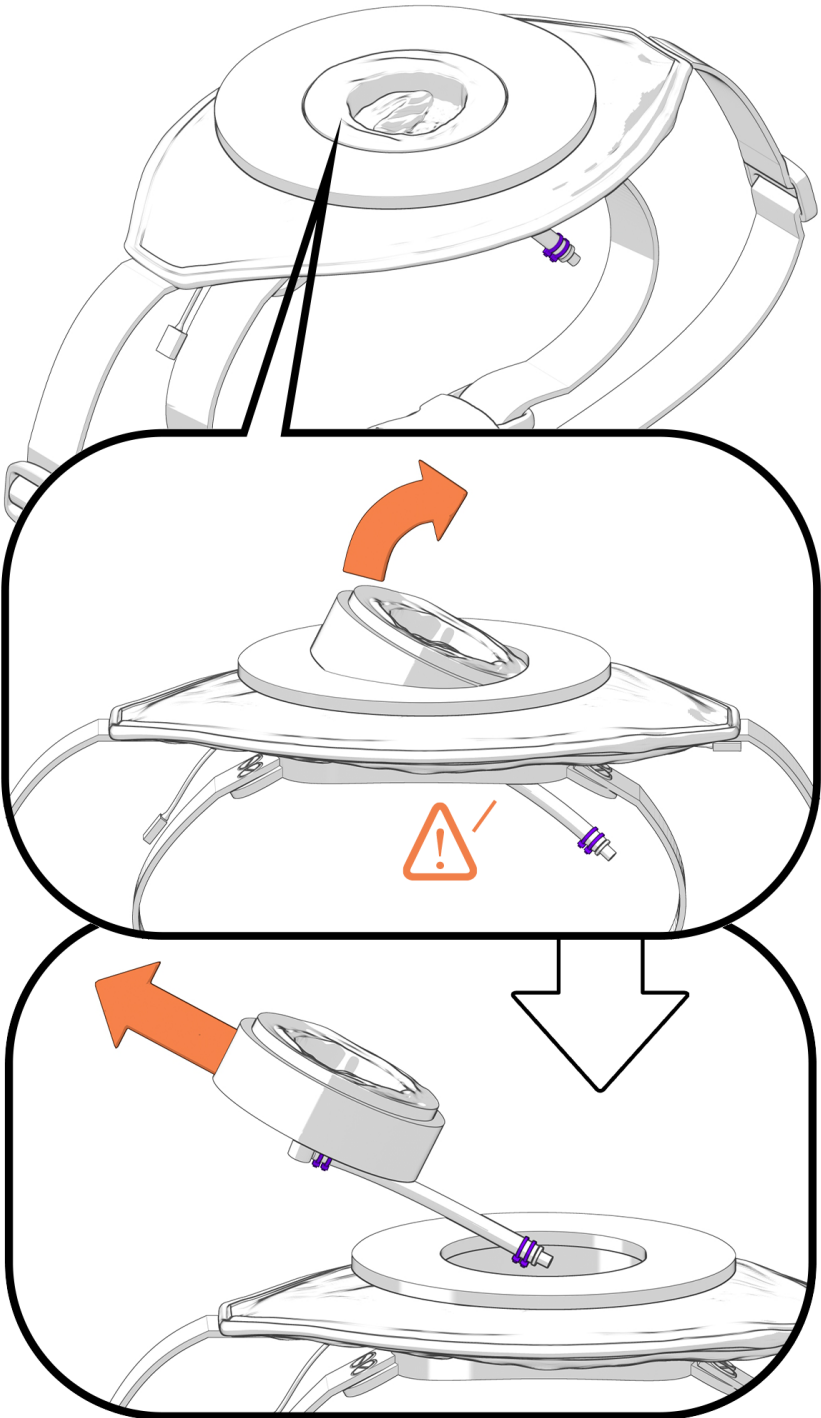


k Flip the device right side up, remove the paper towel from the wound, and pull back on syringe to suck the remaining water out of the insert

i If water is not clear, repeat process

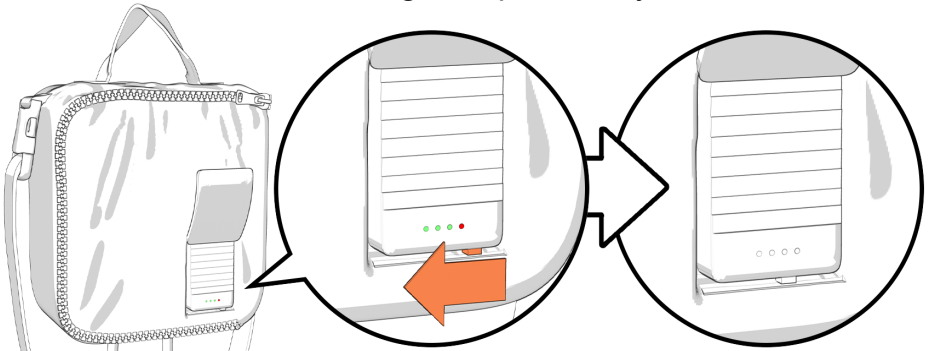


Carefully lift the insert off base, being mindful of the tubing connector on the bottom

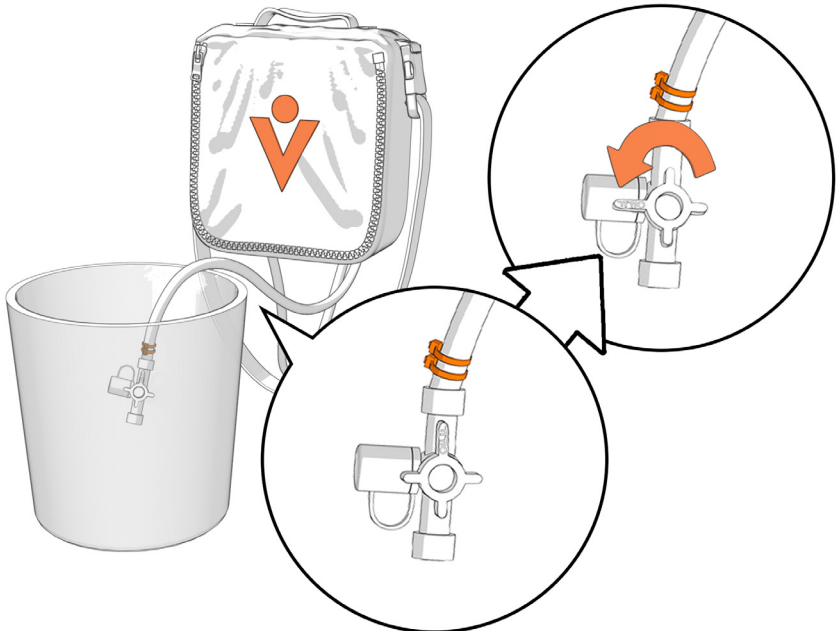


m Clean the silicone inserts and rings with hand sanitizer or 70% alcohol solution. Follow up with cornstarch or baby powder if desired.

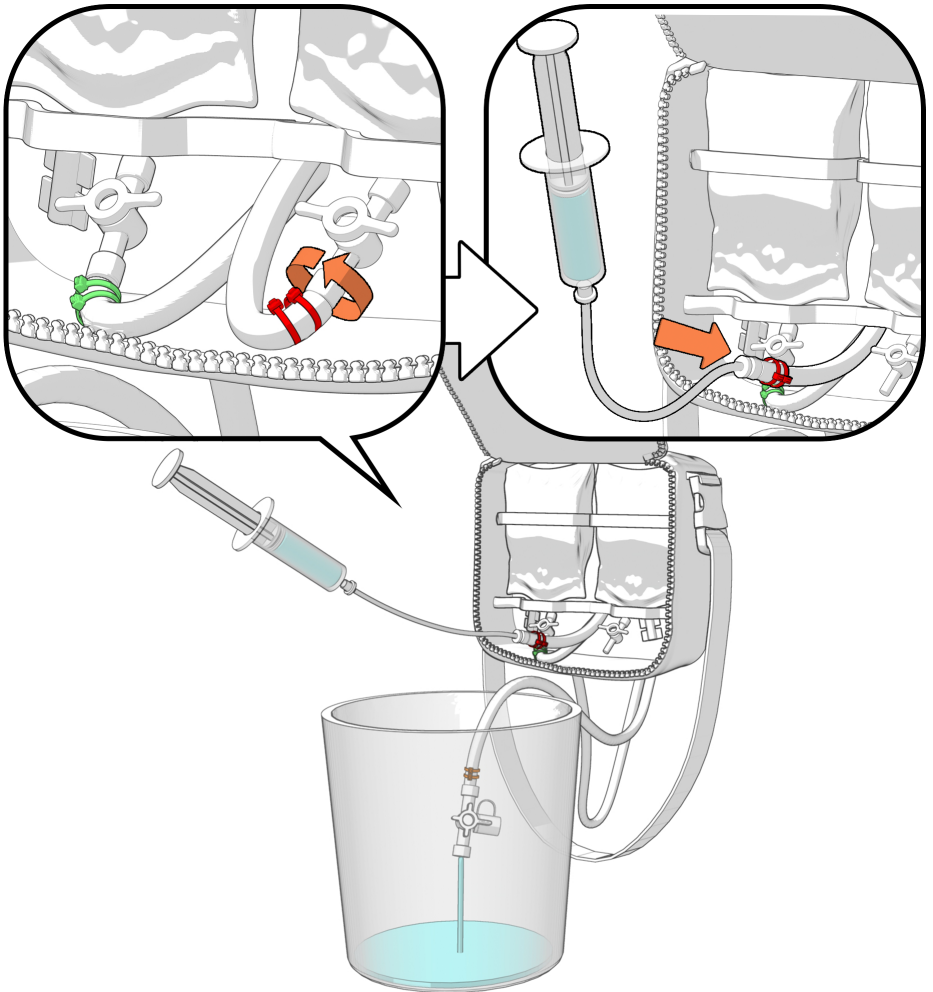
n If switching out the fluidics, you will need to clean out the fluidics tube coming from the control bag as well, if not switching out fluidics, you can leave the stopcock at the end of the tube closed, turn off the control bag, and put it away.



i To clean tubing: Put the end of the tubing in a container, open the stopcock to allow flow out of the tubing



- ii Open the control bag on the “V” side to access the fluidics bags
- iii Making sure the 2-way stopcocks on the fluidics bags are closed, untwist the silicone tubing and attach the cleaning syringe filled with distilled water. Drain the tubing by running the pump that the fluidics is connected to until the syringe is empty. Then immediately disconnect the syringe.

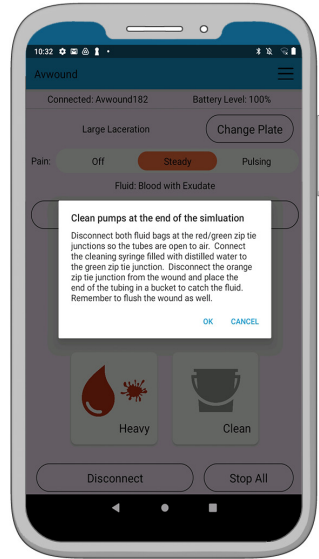
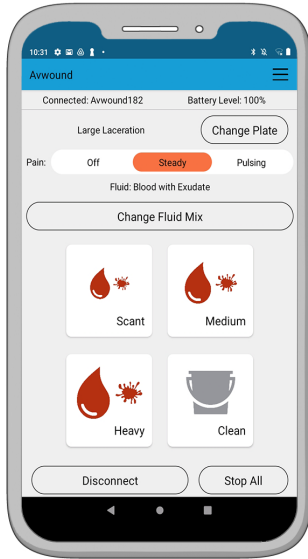


- iv Repeat cleaning steps for other fluidics bag

V With both tubes disconnected from fluids bags, run both pumps until the fluids are drained from the tubing

1 Press Clean (grey bucket icon)

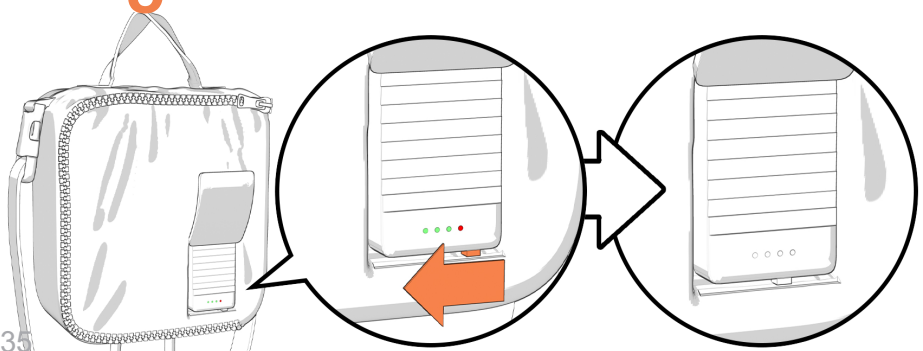
2 Press OK



vi If you want to refill the fluidics bags, remove them from the control bag at this point and fill them up. Please use fluids with no sugars.

vii Connect the silicone tubes back to the fluidics bags

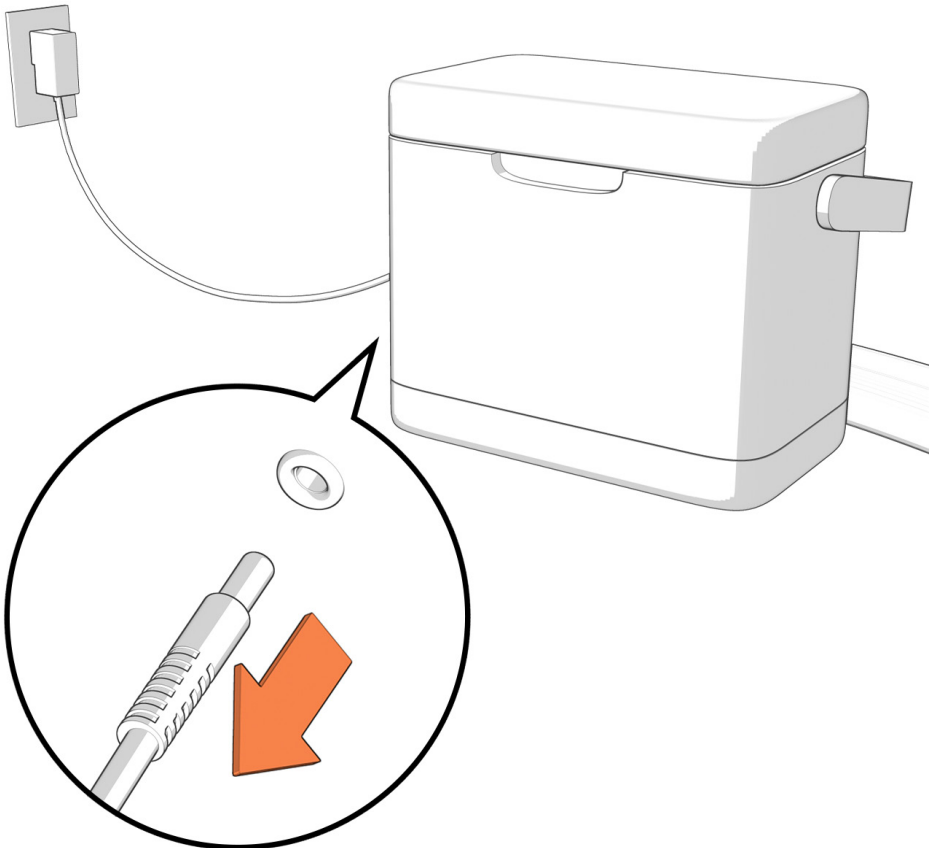
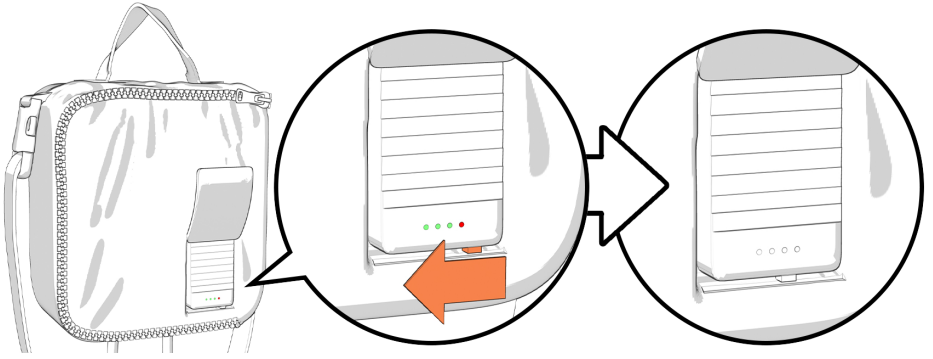
O Turn off device



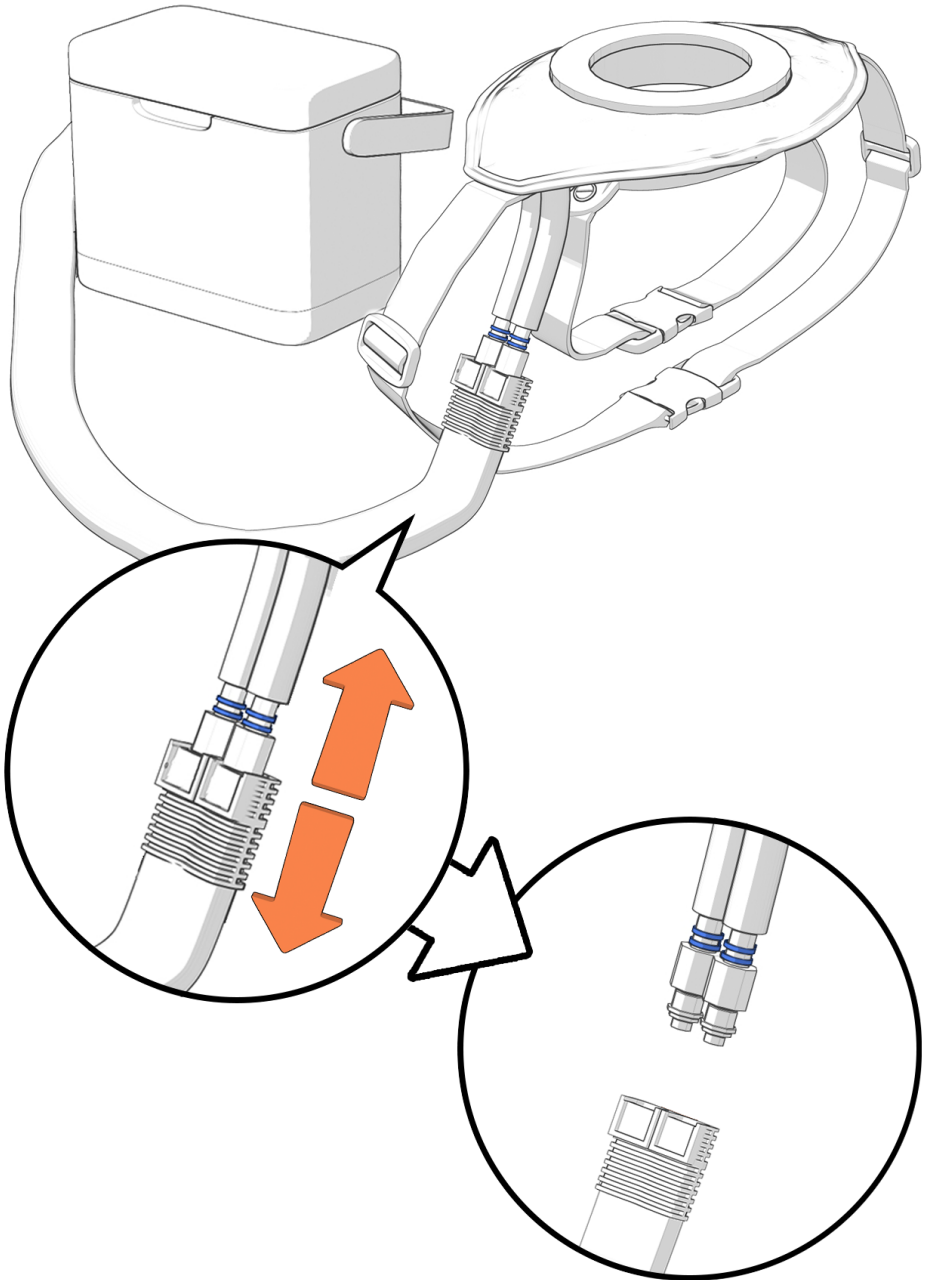
4 Deep, blanching

a Follow directions for Deep, non-blanching

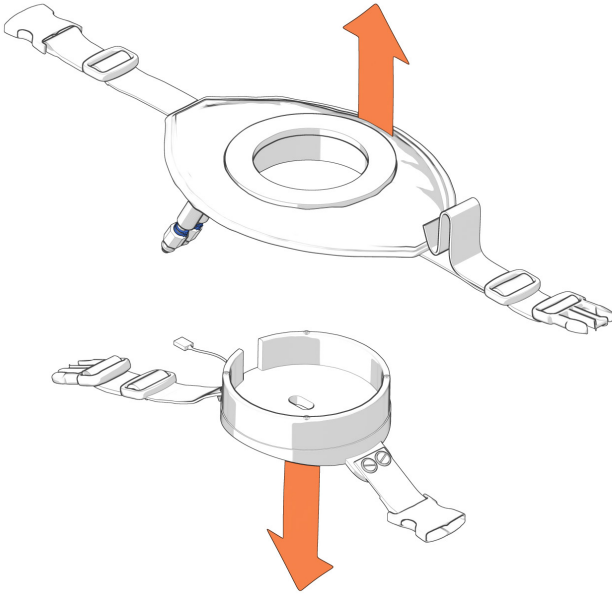
b Turn off device and unplug cooler



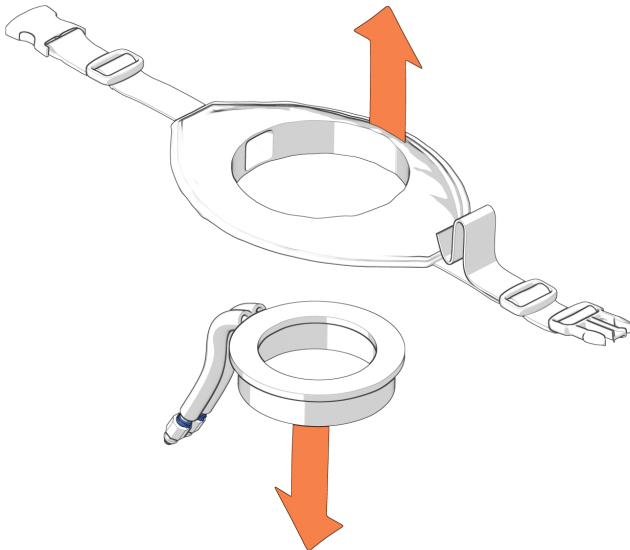
- C** Disconnect connectors (2) labeled blue from the cooler tubing



- d** Remove deep blanching ring and belt from base of device



- e** Remove the outer donut from the belt



- f** Clean the silicone inserts and rings with hand sanitizer or 70% alcohol solution. Follow up with cornstarch or baby powder if desired.

Avwound is provided by:



www.avkin.com